



**Sonoma County Fire District Board of Directors
Continued Special Board Meeting Agenda
Tuesday September 1, 2020 5:00PM**

Location: Fire Station 1 - 8200 Old Redwood Hwy. Windsor

**Pursuant to the Governor of California's Executive Order N-25-20
Dated March 12, 2020**

**This meeting will be held via teleconference (information below)
1-301-715-8592**

Meeting ID: 968 5298 0639

Join Zoom Meeting

<https://zoom.us/j/96852980639>

Thank you for supporting our COVID-19 precautions

The Board meeting agenda and all supporting documents are available for public review at 8200 Old Redwood Highway, Windsor, CA, 24 hours in advance of a scheduled board meeting. Materials related to an item on this Agenda submitted to the Board after distribution of the agenda packet, and not otherwise exempt from disclosure, will be made available for public inspection at the District Office at 8200 Old Redwood Hwy, Windsor, during normal business hours and on the website at www.sonomacountyfd.org. Copies of supplemental materials distributed at the Board meeting will be available for public inspection at the meeting location.

In accordance with the Americans with Disabilities Act, anyone needing special assistance to participate in this meeting should contact District Executive Assistant Kathy Washington at the District Office at 707-838-1170. Notification 48-hours before the meeting will enable the District to make reasonable arrangements to ensure accessibility to this meeting.

CALL TO ORDER

PLEDGE OF ALLEGIANCE

ROLL CALL

President Nelson

Vice President Klick

Director So

Secretary/Treasurer Tognozzi

Director Hamann

Director Treanor

Director Briare

REPORT OUT ON CLOSED SESSION

1. July 21, 2020
2. August 25, 2020

OPEN TIME FOR PUBLIC EXPRESSION

(Three-minute time limit)

This is an opportunity for any member of the public to briefly address the District Board on any matter that does not appear on this agenda. Items that appear to warrant a lengthier presentation or Board consideration may be placed on the agenda for discussion at a future meeting.

AGENDA ADJUSTMENTS

An opportunity for the Board President to approve adjustments to the current agenda. Board originally set August 18th for adoption of the final budget, but the budget hearing and final budget adoption will be held on September 1st as officially noticed.



Sonoma County Fire District Board of Directors
Continued Special Board Meeting Agenda
Tuesday September 1, 2020 5:00PM

Location: Fire Station 1 - 8200 Old Redwood Hwy. Windsor

Pursuant to the Governor of California's Executive Order N-25-20
Dated March 12, 2020

This meeting will be held via teleconference (information below)
1-301-715-8592

Meeting ID: 968 5298 0639

Join Zoom Meeting

<https://zoom.us/j/96852980639>

Thank you for supporting our COVID-19 precautions

PRESENTATION

SONOMA COUNTY PROFESSIONAL FIREFIGHTERS ASSOCIATION PRESIDENT'S REPORT

An opportunity for the President of the Sonoma County Professional Firefighters Association to address the Board on matters of the Association.

DIRECTOR REPORTS

An opportunity for Directors to report on their individual activities related to District business.

FIRE CHIEF'S REPORT

Chief Heine will report on District administration and operations.

ACTION ITEMS

Public Hearing: The Board will conduct a public hearing to consider adoption of a Resolution determining the tax rates to be imposed on all the real property within the District during Fiscal Year 2020/2021; and a Resolution to adopt the Fiscal Year 2020/2021 final budget.

1. **RESOLUTION 2020-16 A RESOLUTION OF THE BOARD OF DIRECTORS OF THE SONOMA COUNTY FIRE DISTRICT, COUNTY OF SONOMA, STATE OF CALIFORNIA, DETERMINING THE TAX RATES TO BE IMPOSED ON ALL THE REAL PROPERTY WITHIN THE DISTRICT DURING FISCAL YEAR 2020/21**

The Board shall open the item for public hearing and take action upon close of the public comments. Board will consider adopting Resolution 2020-16, determining the tax rates to be imposed on all the properties within the District FY 2020/2021.

2. **RESOLUTION 2020-17 A RESOLUTION OF THE BOARD OF DIRECTORS OF THE SONOMA COUNTY FIRE DISTRICT, COUNTY OF SONOMA, STATE OF CALIFORNIA, ADOPTING THE FY 2020/2021 FINAL BUDGET.**

The Board shall open the item for public hearing and take action upon close of the public comments. Board will consider adopting Resolution 2020-17, adopting the final budget for FY 2020/2021.



Sonoma County Fire District Board of Directors
Continued Special Board Meeting Agenda
Tuesday September 1, 2020 5:00PM

Location: Fire Station 1 - 8200 Old Redwood Hwy. Windsor

Pursuant to the Governor of California's Executive Order N-25-20
Dated March 12, 2020

This meeting will be held via teleconference (information below)
1-301-715-8592

Meeting ID: 968 5298 0639

Join Zoom Meeting

<https://zoom.us/j/96852980639>

Thank you for supporting our COVID-19 precautions

3. **RESOLUTION 2020-18 A CONCURRENT RESOLUTION OF THE BOARD OF DIRECTORS OF THE SONOMA COUNTY FIRE DISTRICT AND THE BOARD OF DIRECTORS OF THE FORESTVILLE FIRE PROTECTION DISTRICT; CONSTITUTING THE DISTRICTS' RESOLUTION OF APPLICATION TO THE LOCAL AGENCY FORMATION COMMISSION OF SONOMA COUNTY FOR THE ANNEXATION OF THE FORESTVILLE FIRE PROTECTION DISTRICT INTO THE SONOMA COUNTY FIRE DISTRICT.**

The Board of Directors will consider adopting Resolution 2020-18, constituting the Districts' resolution of application to the LAFCO commission of Sonoma County for the annexation of the Forestville Fire Protection District into the Sonoma County Fire District.

4. **RESOLUTION 2020-19 A RESOLUTION OF THE BOARD OF DIRECTORS OF THE SONOMA COUNTY FIRE DISTRICT, COUNTY OF SONOMA, STATE OF CALIFORNIA, DELEGATION OF AUTHORITY - OTHER POST EMPLOYMENT BENEFIT (OPEB) PREFUNDING PLAN - CALIFORNIA EMPLOYEES RETIREE BENEFIT TRUST (CERBT).**

The Board of Directors will consider adopting Resolution 2020-19, designating the positions of Fire Chief, Deputy Fire Chief and Finance Manager as authorized representatives for the District's CalPERS Other Post Employment Prefunding Plan - CERBT account.

5. **RESOLUTION 2020-20 A RESOLUTION OF THE BOARD OF DIRECTORS OF THE SONOMA COUNTY FIRE DISTRICT DECLARING WEEDS A NUISANCE.**

The Board will consider adopting Resolution 2020-20; a resolution that declares weeds a nuisance and fire hazard and empowers the District to issue demand letters to non-compliant property owners.

6. **REPLACEMENT OF ROOF AT STATION 8**

The Board will consider authorizing the use of a Master Intergovernmental Cooperative Purchasing Agreement with Garland Design and Build Solutions, Inc. for the replacement of the roof at Station 8 per the Garland DBS, Inc. roofing materials and services proposal (Attachment A). Cost not to exceed \$190,000.00



Sonoma County Fire District Board of Directors
Continued Special Board Meeting Agenda
Tuesday September 1, 2020 5:00PM
Location: Fire Station 1 - 8200 Old Redwood Hwy. Windsor

Pursuant to the Governor of California's Executive Order N-25-20
Dated March 12, 2020

This meeting will be held via teleconference (information below)
1-301-715-8592

Meeting ID: 968 5298 0639

Join Zoom Meeting

<https://zoom.us/j/96852980639>

Thank you for supporting our COVID-19 precautions

7. **EMERGENCY MEDICAL SERVICES TRANSPORT-BILLING HARDSHIP POLICY**

The Board will consider adopting the Emergency Medical Services transport/billing hardship policy, establishing a policy that allows the modifying of ambulance transport fees based on current year Department of Health and Human Service Poverty guidelines.

8. **EMERGENCY MEDICAL SERVICES BILLING, COLLECTION AND WRITE OFF POLICY**

The Board will consider adopting the emergency medical services billing, collection and write-off policy, establishing a policy for the provision, reimbursement, and write-offs of uncollectable accounts of emergency medical services provided by the Sonoma County Fire District.

COMMITTEE REPORT

1. Standing Committee: Finance Committee
2. Ad Hoc Committee: Facilities

FINANCIAL REPORTS

COMMUNICATIONS

ADJOURNMENT

**A RESOLUTION OF THE BOARD OF DIRECTORS OF THE SONOMA COUNTY
FIRE DISTRICT, COUNTY OF SONOMA, STATE OF CALIFORNIA,
DETERMINING THE TAX RATES TO BE IMPOSED ON ALL REAL PROPERTY
WITHIN THE DISTRICT DURING FISCAL YEAR 2020/21**

WHEREAS, Ordinance No. 3540 R of the County of Sonoma, authorizing the Board of Directors of the Windsor Fire Protection District to levy a special tax each year on each parcel of real property within the boundaries of the District, was approved by the voters of the Windsor Fire Protection District in an election held on June 3, 1986; and

WHEREAS, the special tax approved in Ordinance No. 3540 R may be levied at a maximum rate of \$45.00 per unit of benefit on each parcel within the boundaries of the District, applied to the maximum number of units of benefit permitted by Ordinance No. 3540 R; and

WHEREAS, Ordinance No. 2006-1 of the Windsor Fire Protection District, authorizing the District to levy an additional special tax, was approved by the voters of the Windsor Fire Protection District in an election held on November 7, 2006; and

WHEREAS, the special tax approved in Ordinance No. 2006-1 may be levied at a maximum rate, subject to adjustment for inflation, of \$0.04 to \$0.09 per square foot, depending on the parcel use, and/or a flat rate charge of \$36.00 for each mobile-home space or each vacant parcel; and

WHEREAS, on April 4, 2019, the Windsor Fire Protection District, the Rincon Valley Fire Protection District, the Bennett Valley Fire Protection District, and the Mountain Volunteer Fire Department were reorganized by approval of the Sonoma County Local Area Formation Commission into the Sonoma County Fire District, including extension of the special taxes approved in Ordinance No. 3540 R and Ordinance No. 2006-1 to all parcels of real property within the boundaries of the Sonoma County Fire District; and

WHEREAS, on June 15, 2020, the Sonoma County Fire District was reorganized again to include the annexation of the Russian River Fire Protection District by approval of the Sonoma County Local Area Formation Commission, including extension of the special taxes approved in Ordinance No. 3540 R and Ordinance No. 2006-1 to all parcels of real property within the boundaries of the reorganized Sonoma County Fire District; and

WHEREAS, Ordinance No. 2006-1 permits the special tax to be adjusted annually for inflation by an amount equal to the annual adjustment factor determined pursuant to Section 7902 of the California Government Code which was 3.85% for FY 2019-2020, thus establishing new limits for Ordinance 2006-1 as shown in the following table:

2020-21 Rates

Use Code Description	Rate Per APN	Rate Per Space	Charge Base	Cap/Max Limit
Mobile Home Space	N/A	\$56.54	FLAT	N/A
Vacant Land	\$56.54	N/A	FLAT	N/A
Single Family Residential	\$0.0628	N/A	SQFT	\$471
Multi-Family Residential	\$0.0628	N/A	SQFT	\$23,557
Hotel/Motel/Lodging	\$0.0785	N/A	SQFT	\$23,557
Commercial/Light Industrial	\$0.0785	N/A	SQFT	\$4,711
Warehouse	\$0.0942	N/A	SQFT	\$4,711
Heavy Industrial	\$0.1413	N/A	SQFT	\$4,711

WHEREAS, provisions of Ordinance No. 3540 R and Ordinance No. 2006-1 require the Board of Directors of the District hold a public hearing each year to set the amount of each special tax, prior to imposition of the special tax; and is required to establish annually a public hearing date to consider and determine the amount of the special tax to be levied; and

WHEREAS, a public hearing on this matter was held by the Board of Directors of the District on September 1, 2020; and

WHEREAS, after due consideration, it is the opinion of the Board of Directors of the District that said taxes are necessary for the proper operation of the District’s business and for the provisions of fire protection services, fire prevention , emergency medical services and capital improvements; and

NOW, THEREFORE, BE IT RESOLVED that the Board of Directors of the Sonoma County Fire District hereby adopts the rates of special taxes for Fiscal Year 2020/2021, and directs the administrative staff to notify the Sonoma County Tax Collector of the rates as adopted and request the same be collected as provided in Ordinance No. 3540 R and Ordinance No. 2006-1.

The above and foregoing Resolution was introduced by Director _____, who moved its adoption, seconded by Director _____, and adopted by the Board of Directors of the Sonoma County Fire District this 1st day of September, 2020.

Directors Klick ____, Nelson ____, Hamann ____, Treanor ____,

Briare ____, So ____, Tognozzi ____

AYES ____ NOES ____ ABSENT/NOT VOTING ____

WHEREUPON, the Board President declared the foregoing Resolution adopted; and **SO ORDERED**.

ATTEST:

Kathy Washington, Secretary of the Board



Sonoma County Fire District Board of Directors
Staff Report

Date: September 1, 2020

Topic: 2020-2021 Final Budget

Recommendation:

Adopt Resolution # 2020-17 for the 2020-2021 Final Budget

Financial Impact:

The 2020-2021 Fiscal Year Final Budget represents adjustments to the District's revenue and expenditures since the Board's adoption of the preliminary budget. The impact of the final budget adjustments is an additional use of the district fund/reserves in the amount of \$27,039.

Background:

The Board of Directors adopted a 2020-2021 Fiscal Year Preliminary Budget on June 16, 2020. The Final Budget for your consideration includes the following:

Re-Budgeting of the following 2019-2020 projects that are continuing into Fiscal Year 2020-2021:

Standards of Cover Contract	\$21,400
Impact Fee Study Contract	\$24,500
Station 1 Remodel Project (Town of Windsor Mitigation Funding Offset)	\$160,000
Station 1 Ringdown/Alerting System Project	\$75,000
Station 1 Security Project	\$5,000
Station 6 Remodel Project	\$841,726
Station 8 Roof Project - *Additional funds required under new requests	\$130,000
Command Vehicle Purchase (Tahoe)	\$75,000
Utility Vehicle Purchase (previously Russian River FPD Budgeted, USDA Grant revenue offset of \$59,400)	\$95,000



Sonoma County Fire District Board of Directors
Staff Report

Additionally, the Final Budget includes the following new adjustments:

<u>Volunteer Fire Assistance Grant</u>	
Radios	\$19,947
Hose	\$18,910
Grant is a 50/50 match, offsetting revenue is \$19,429	
EMS- Continuous Quality Improvement Contract (CQI)	\$10,000
Increase in Medical Director Contract	\$12,000
Increase in the City of Sebastopol Contract	\$5,000
Station 5 Temporary Building Rental for COVID19 compliance	\$25,800
Station 8 Roof Project, *Additional funding required above the 2019-2020FY funds	\$60,000
Purchase of the surplus courier vehicle from Santa Rosa Fire Department	\$10,000
Adjustment to the Apparatus Lease Payment- Only one payment required in FY 2020-2021	-\$115,189

2020-2021 Final Budget Adjustment Summary			
	Expenditures	Revenue	Impact to Fund/Reserve Balance*
Re-Budgets	\$1,427,626	\$219,400	-\$1,208,226
New Expenditures	\$161,657	\$19,429	-\$142,228
Less Savings Adjustment on Lease	-\$115,189	\$0	+\$115,189
Totals	\$1,474,094	\$238,829	-\$1,235,265

*Final Budget Adjustments result in a use of the fund/reserve balance in the amount of \$27,039 over the amounts previously approved by the Board.



Sonoma County Fire District
Fiscal Year 2020-2021 Final Budget
For the Period of July 1, 2020 to June 30, 2021

10 • Taxes

1000 - Property Taxes - CY Secured	\$8,400,000
1001 - CY Special Tax	\$5,675,000
1008 - RDA Increment	-\$761,000
1011 - Property Tax Collection Fee	-\$90,000
1014 - AB 1290 RDA Pass-Throughs	\$210,000
1017 - Residual Prop Tax	\$488,200
1020 - Property Taxes - CY Supp	\$84,000
1040 - Property Taxes - CY Unsecured	\$265,000
1061 - PY Special Tax	\$42,000

Total 10 • Taxes **\$14,313,200**

17 • Use of Money/Property

1700 - Interest on Pooled Cash	\$5,000
1701 - Misc. Interest Earned	\$12,500
1800 - Rents and Concessions	\$36,000

Total 17 • Use of Money/Property **\$53,500**

20 • Intergovernmental Revenues

2440 - ST- HOPTR	\$90,300
2441 - State-Other	\$22,929
2495- Sonoma County Abatement Program Grant	\$103,000
2500 - SAFER Grant Funding	\$434,000
2600 - County Tax Exchange Agreement	\$1,800,000
2700- Town of Windsor (Mitigation Fund)	\$160,000
2750- Federal Grant	\$59,400

Total 20 • Intergovernmental Revenues **\$2,669,629**

30- Charges for Services

3145 - Plans & Inspection Services	\$50,000
3661 • Fire Control Services	\$10,000
3670 • Ambulance Billings	\$920,000

Total 30 • Charges for Services **\$980,000**

40 • Miscellaneous Revenues

4040 - Misc. Revenue	\$32,600
4041 - Graton Rancheria	\$824,820
4103 Work Comp Reimbursement	\$25,000
4159 - Lytton Tribal Funds	\$50,000

Total 40 • Miscellaneous Revenues **\$932,420**

Total Revenue **\$18,948,749**

Transfer in from Sonoma County Fire District's Reserve (Fund Balance) **\$1,502,146**



Sonoma County Fire District
Fiscal Year 2020-2021 Final Budget
For the Period of July 1, 2020 to June 30, 2021
Continued

50 · Salaries/Employment Benefits	Final Budget
5906- Volunteer Firefighter Stipends/Pay	\$38,500
5907- Apprentice Firefighter Stipends	\$31,500
5910 - Permanent Positions	\$9,296,003
5911 -Part Time Employees	\$36,000
5912 - Overtime	\$1,300,000
5913- On-Call Stipends	\$125,000
5923 - PERS- District Expense	\$1,726,719
5924 - Medicare/FICA	\$128,012
5929- Retiree Health Ins/Benefits	\$144,000
5930 - Health Insurance	\$1,634,940
5931 - Disability Insurance	\$26,400
5932 - Dental Insurance	\$146,880
5933 - Life Insurance	\$5,520
5934 - Vision Insurance	\$8,640
5935 - Unemployment Insurance	\$22,000
5940 - Workers' Comp	\$794,799
5970 - Deferred Comp	\$53,400
5971 - PTO Payout	\$35,000
5972 - Medical Stipend	\$38,000
Total 50 · Salaries/Employment Benefits	\$15,591,314

60 · Services/Supplies	
6015- Annexation Related Expense	\$100,000
6021 - Uniform Expense	\$92,300
6022 - Safety Clothing	\$144,500
6040 - Communications	\$92,947
6060 - Food	\$5,500
6084 - Janitorial Supplies	\$20,000
6100 - Insurance	\$88,750
6140 - Maintenance-Equip. & Apparatus	\$215,300
6154 - Maintenance Equip.-Hose Replace	\$66,810
6180 - Maintenance-Buildings	\$47,500
6261 - Medical Supplies	\$138,000
6280 - Memberships	\$22,400
6300 - Prevention Materials	\$20,000
6400 - Office Expense	\$15,000
6410 - Postage	\$2,500
6457 - Computer Charges	\$138,750



Sonoma County Fire District
Fiscal Year 2020-2021 Final Budget
For the Period of July 1, 2020 to June 30, 2021
Continued

60 - Services/Supplies (Continued)	Final Budget
6461 - Employee Wellness Programs	\$78,800
6462 - Furniture	\$17,500
6463 - Resource Materials	\$23,300
6500 - Professional/Special Services	\$430,500
6501 - Weed Abatement Program Contract	\$103,000
6587 - LAFCO	\$20,000
6610 - Legal Services	\$108,000
6630 - Audit/Accounting Services	\$16,000
6633 - Payroll Expense	\$15,000
6634 - Bank Service Charges	\$3,500
6666- Ambulance Charges	\$80,000
6800 - Public/Legal Notices	\$1,000
6820 - Rents/Leases-Equipment	\$38,900
6880 - Small Tools/Instruments	\$33,150
6881 - Safety Equipment	\$37,600
7120 - Training-In-Service	\$140,100
7150 - Employee Recognition	\$2,500
7201 - Gas/Oil	\$82,000
7320 - Utilities	\$118,500
Total 60 - Services/Supplies	\$2,559,607
75- Long Term Debt	
7910 - L.T. Debt - Principal	\$179,375
7930 - Interest L.T. Debt	\$23,873
Total 75 - Long Term Debt	\$203,248
85 -Capital Expenditures	
8510 - Buildings/Improvements	\$1,566,726
8560 - Equipment	\$180,000
8570 - CERBT Contributions	\$350,000
Total 85 - Capital Assets	\$2,096,726
Total Expenditures	\$20,450,895
OPERATING SURPLUS / (DEFICIT)	\$0



**Sonoma County Fire District
Fiscal Year 2020-2021 Final Budget
For the Period of July 1, 2020 to June 30, 2021**

	Adopted Preliminary Budget	Adjustments	Final Budget
10 - Taxes			
1000 - Property Taxes - CY Secured	\$8,400,000	\$0	\$8,400,000
1001 - CY Special Tax	\$5,675,000	\$0	\$5,675,000
1008 - RDA Increment	-\$761,000	\$0	-\$761,000
1011 - Property Tax Collection Fee	-\$90,000	\$0	-\$90,000
1014 - AB 1290 RDA Pass-Throughs	\$210,000	\$0	\$210,000
1017 - Residual Prop Tax	\$488,200	\$0	\$488,200
1020 - Property Taxes - CY Supp	\$84,000	\$0	\$84,000
1040 - Property Taxes - CY Unsecured	\$265,000	\$0	\$265,000
1061 - PY Special Tax	\$42,000	\$0	\$42,000
Total 10 - Taxes	\$14,313,200	\$0	\$14,313,200
17 - Use of Money/Property			
1700 - Interest on Pooled Cash	\$5,000	\$0	\$5,000
1701 - Misc. Interest Earned	\$12,500	\$0	\$12,500
1800 - Rents and Concessions	\$36,000	\$0	\$36,000
Total 17 - Use of Money/Property	\$53,500	\$0	\$53,500
20 - Intergovernmental Revenues			
2440 - ST- HOPTR	\$90,300	\$0	\$90,300
2441 - State-Other	\$3,500	\$19,429	\$22,929
2495- Sonoma County Abatement Program Grant	\$103,000	\$0	\$103,000
2500 - SAFER Grant Funding	\$434,000	\$0	\$434,000
2600 - County Tax Exchange Agreement	\$1,800,000	\$0	\$1,800,000
2700- Town of Windsor (Mitigation Fund)	\$0	\$160,000	\$160,000
2750- Federal Grant	\$0	\$59,400	\$59,400
Total 20 - Intergovernmental Revenues	\$2,430,800	\$238,829	\$2,669,629
30- Charges for Services			
3145 - Plans & Inspection Services	\$50,000	\$0	\$50,000
3661 - Fire Control Services	\$10,000	\$0	\$10,000
3670 - Ambulance Billings	\$920,000	\$0	\$920,000
Total 30 - Charges for Services	\$980,000	\$0	\$980,000
40 - Miscellaneous Revenues			
4040 - Misc. Revenue	\$32,600	\$0	\$32,600
4041 - Graton Rancheria	\$824,820	\$0	\$824,820
4103 Work Comp Reimbursement	\$25,000	\$0	\$25,000
4159 - Lytton Tribal Funds	\$50,000	\$0	\$50,000
Total 40 - Miscellaneous Revenues	\$932,420	\$0	\$932,420
Total Revenue	\$18,709,920	\$238,829	\$18,948,749
Transfer in from Sonoma County Fire District's Reserve (Fund Balance)	\$266,881	\$1,235,265	\$1,502,146



Sonoma County Fire District
Fiscal Year 2020-2021 Final Budget
For the Period of July 1, 2020 to June 30, 2021
Continued

	Adopted Preliminary Budget	Adjustments	Final Budget
50 · Salaries/Employment Benefits			
5906- Volunteer Firefighter Stipends/Pay	\$38,500	\$0	\$38,500
5907- Apprentice Firefighter Stipends	\$31,500	\$0	\$31,500
5910 - Permanent Positions	\$9,296,003	\$0	\$9,296,003
5911 -Part Time Employees	\$36,000	\$0	\$36,000
5912 - Overtime	\$1,300,000	\$0	\$1,300,000
5913- On-Call Stipends	\$125,000	\$0	\$125,000
5923 - PERS- District Expense	\$1,726,719	\$0	\$1,726,719
5924 - Medicare/FICA	\$128,012	\$0	\$128,012
5929- Retiree Health Ins/Benefits	\$144,000	\$0	\$144,000
5930 - Health Insurance	\$1,634,940	\$0	\$1,634,940
5931 - Disability Insurance	\$26,400	\$0	\$26,400
5932 - Dental Insurance	\$146,880	\$0	\$146,880
5933 - Life Insurance	\$5,520	\$0	\$5,520
5934 - Vision Insurance	\$8,640	\$0	\$8,640
5935 - Unemployment Insurance	\$22,000	\$0	\$22,000
5940 - Workers' Comp	\$794,799	\$0	\$794,799
5970 - Deferred Comp	\$53,400	\$0	\$53,400
5971 - PTO Payout	\$35,000	\$0	\$35,000
5972 - Medical Stipend	\$38,000	\$0	\$38,000
Total 50 · Salaries/Employment Benefits	\$15,591,314	\$0	\$15,591,314
60 · Services/Supplies			
6015- Annexation Related Expense	\$100,000	\$0	\$100,000
6021 - Uniform Expense	\$92,300	\$0	\$92,300
6022 - Safety Clothing	\$144,500	\$0	\$144,500
6040 - Communications	\$73,000	\$19,947	\$92,947
6060 - Food	\$5,500	\$0	\$5,500
6084 - Janitorial Supplies	\$20,000	\$0	\$20,000
6100 - Insurance	\$88,750	\$0	\$88,750
6140 - Maintenance-Equip. & Apparatus	\$215,300	\$0	\$215,300
6154 - Maintenance Equip.-Hose Replace	\$47,900	\$18,910	\$66,810
6180 - Maintenance-Buildings	\$47,500	\$0	\$47,500
6261 - Medical Supplies	\$138,000	\$0	\$138,000
6280 - Memberships	\$22,400	\$0	\$22,400
6300 - Prevention Materials	\$20,000	\$0	\$20,000
6400 - Office Expense	\$15,000	\$0	\$15,000
6410 - Postage	\$2,500	\$0	\$2,500
6457 - Computer Charges	\$138,750	\$0	\$138,750



Sonoma County Fire District
Fiscal Year 2020-2021 Final Budget
For the Period of July 1, 2020 to June 30, 2021
Continued

	Adopted Preliminary Budget	Adjustments	Final Budget
60 - Services/Supplies (Continued)			
6461 - Employee Wellness Programs	\$78,800	\$0	\$78,800
6462 - Furniture	\$17,500	\$0	\$17,500
6463 - Resource Materials	\$23,300	\$0	\$23,300
6500 - Professional/Special Services	\$357,600	\$72,900	\$430,500
6501 - Weed Abatement Program Contract	\$103,000	\$0	\$103,000
6587 - LAFCO	\$20,000	\$0	\$20,000
6610 - Legal Services	\$108,000	\$0	\$108,000
6630 - Audit/Accounting Services	\$16,000	\$0	\$16,000
6633 - Payroll Expense	\$15,000	\$0	\$15,000
6634 - Bank Service Charges	\$3,500	\$0	\$3,500
6666- Ambulance Charges	\$80,000	\$0	\$80,000
6800 - Public/Legal Notices	\$1,000	\$0	\$1,000
6820 - Rents/Leases-Equipment	\$13,100	\$25,800	\$38,900
6880 - Small Tools/Instruments	\$33,150	\$0	\$33,150
6881 - Safety Equipment	\$37,600	\$0	\$37,600
7120 - Training-In-Service	\$140,100	\$0	\$140,100
7150 - Employee Recognition	\$2,500	\$0	\$2,500
7201 - Gas/Oil	\$82,000	\$0	\$82,000
7320 - Utilities	\$118,500	\$0	\$118,500
Total 60 - Services/Supplies	\$2,422,050	\$137,557	\$2,559,607
75- Long Term Debt			
7910 - L.T. Debt - Principal	\$270,317	-\$90,942	\$179,375
7930 - Interest L.T. Debt	\$48,120	-\$24,247	\$23,873
Total 75 - Long Term Debt	\$318,437	-\$115,189	\$203,248
85 -Capital Expenditures			
8510 - Buildings/Improvements	\$295,000	\$1,271,726	\$1,566,726
8560 - Equipment	\$0	\$180,000	\$180,000
8570 - CERBT Contributions	\$350,000	\$0	\$350,000
Total 85 - Capital Assets	\$645,000	\$1,451,726	\$2,096,726
Total Expenditures	\$18,976,801	\$1,474,094	\$20,450,895
OPERATING SURPLUS / (DEFICIT)	\$0	\$0	\$0

Resolution No.2020-17
Dated: September 1, 2020

**A RESOLUTION OF THE BOARD OF DIRECTORS OF
THE SONOMA COUNTY FIRE DISTRICT, OF SONOMA COUNTY, STATE OF CALIFORNIA,
ADOPTING THE FY 2020-2021 FINAL BUDGET**

WHEREAS, the Board of Directors of the Sonoma County Fire District has reviewed the final budget for the period of July 1, 2020 to June 30, 2021 for the General Fund for the 2020-2021 fiscal year;

NOW, THEREFORE, BE IT RESOLVED that the Board of Directors of the Sonoma County Fire District does adopt a final budget for the General Fund for the 2020-2021, for the period of July 1, 2020 to June 30, 2021 fiscal year in the amount of \$20,450,895;

THE FOREGOING RESOLUTION was introduced by Director _____, who moved its adoption, seconded by Director _____, and adopted by the following vote:

Director Klick _____, Director Nelson _____, Director Treanor _____,
Director Tognozzi _____, Director Briare _____, Director Hamann _____,
Director So _____

AYES _____ NOES _____ ABSENT/NOT VOTING _____

WHEREUPON, the President declared the foregoing resolution adopted and **SO ORDERED**

Attested:

Signature: _____
Kathy Washington- Secretary of the Board



**Sonoma County Fire District
5 Year Financial Projections at Fiscal Year 2020-2021 Final Budget Adoption**

	2020-21 Projection	2021-22 Projection*	2022-23 Projection*	2023-24 Projection*	2024-25 Projection*
Total 10 · Taxes	\$14,313,200	\$14,885,728	\$15,481,157	\$16,100,403	\$16,744,420
Total 17 · Use of Money/Property	\$53,500	\$53,500	\$53,500	\$53,500	\$53,500
Total 20 · Intergovernmental Revenues	\$2,669,629	\$1,947,800	\$2,041,600	\$2,100,034	\$2,100,034
Total 30 · Charges for Services	\$980,000	\$980,000	\$980,000	\$980,000	\$980,000
Total 40 · Miscellaneous Revenues	\$932,420	\$1,006,517	\$1,081,096	\$1,156,166	\$1,156,166
Total Revenue	\$18,948,749	\$18,873,545	\$19,637,353	\$20,390,103	\$21,034,120
Total 50 · Salaries/Employment Benefits	\$15,591,314	\$15,958,488	\$16,437,243	\$16,930,360	\$17,438,271
Total 60 · Services/Supplies	\$2,559,607	\$2,195,806	\$2,261,680	\$2,329,531	\$2,399,417
Total 75 · Long Term Debt	\$203,248	\$318,437	\$318,437	\$318,437	\$318,437
Total 85 · Capital Assets	\$2,096,726	\$350,000	\$350,000	\$350,000	\$350,000
Total Expenditures	\$20,450,895	\$18,822,731	\$19,367,360	\$19,928,328	\$20,506,124

OPERATING SURPLUS / (DEFICIT)	\$(1,502,146)	\$50,814	\$269,993	\$461,776	\$527,995
--------------------------------------	----------------------	-----------------	------------------	------------------	------------------

*Note \$1,427,626 use of fund balance due to re-budgeted one-time projects from Fiscal Year 2019-2020

FUND BALANCES								
General Fund- Unassigned	\$	11,296,735	\$	11,347,549	\$	12,079,318	\$	12,607,314
TOTAL FUND BALANCES	\$	11,296,735	\$	11,347,549	\$	12,079,318	\$	12,607,314

*Assumes 4% Growth on Property Taxes for FY21/22, FY22/23, FY23/24, & 24/25
 Assumes 3% increase on Salaries and Benefits for FY21/22, FY22/23, FY23/24, & FY 24/25
 Assumes 3% Cost Inflation on Service and Supplies for FY21/22, FY22/23, FY23/24, & FY 24/25
 Eliminates one-time Revenue and Expenditures for FY21/22, FY22/23, FY23/24, & FY 24/25

Forestville Fire Protection District RESOLUTION No. 20/21-02
Sonoma County Fire District RESOLUTION No. 2020- 18

Dated: August 11, 2020 (FFPD)
~~August 18~~, 2020 (SCFD)
September 1

A CONCURRENT RESOLUTION OF THE BOARD OF DIRECTORS OF THE SONOMA COUNTY FIRE DISTRICT AND THE BOARD OF DIRECTORS OF THE FORESTVILLE FIRE PROTECTION DISTRICT: CONSTITUTING THE DISTRICTS' RESOLUTION OF APPLICATION TO THE LOCAL AGENCY FORMATION COMMISSION OF SONOMA COUNTY FOR THE ANNEXATION OF THE FORESTVILLE FIRE PROTECTION DISTRICT INTO THE SONOMA COUNTY FIRE DISTRICT

WHEREAS, the Boards of Directors of Sonoma County Fire District (“SCFD”), the Forestville Fire Protection District (“FFPD”), and the Board of Supervisors of the County of Sonoma on behalf of the Incident Response Plan area 51 in County Service Area No. 40 (“CSA-40 IRP areas”); all located in Sonoma County, California (collectively “the Parties”), desire to initiate proceedings pursuant to the Cortese-Knox-Hertzberg Local Government Reorganization Act of 2000, commencing with section 56000 of the California Government Code (“Cortese-Knox-Hertzberg Act”), with the Local Agency Formation Commission of the County of Sonoma (“Sonoma LAFCO”) for the reorganization of the Parties as specified herein; and

WHEREAS, the Parties have agreed to initiate proceedings with Sonoma LAFCO for reorganization consisting of the dissolution of FFPD, and detachment of the CSA-40 IRP areas; and annexation of the territory in the dissolved District and detached area into the SCFD (“the Proposed Reorganization”) resulting in a reorganized fire protection district which shall continue to be called the Sonoma County Fire District (“the Reorganized District”); and

WHEREAS, California Government Code section 56853 provides in part that, in the case of a concurrent resolution for reorganization, Sonoma LAFCO shall approve or conditionally approve, the Proposed Reorganization; and

WHEREAS, notice of intent to adopt this Concurrent Resolution has not been given to Sonoma LAFCO, or to any interested agency or subject agency; and

WHEREAS, the boundaries of the territory included in the Reorganized District will be the combined territories of SCFD, FFPD, and the CSA-40 IRP areas, as described in Exhibit “A”, attached hereto and incorporated herein by this reference; and

WHEREAS, the Proposed Reorganization is consistent with the amended spheres of influence of the Parties, based on specific determinations in Sonoma LAFCO Resolution No. 2719, adopted on December 4, 2019; and

WHEREAS, the territory included in the Reorganized District is inhabited, as defined in the Cortese-Knox- Hertzberg Act; and

WHEREAS, the Parties desire that the Proposed Reorganization be subject to the following terms and conditions as set forth herein:

- a. The name of the Reorganized District shall continue to be the “Sonoma County Fire District”.
- b. The Reorganized District is intended to achieve greater economy and efficiency in providing fire protection and emergency services. The Parties have determined that the Proposed Reorganization is in the best interest of the Parties in order to protect better services to the residents of the Reorganized District.
- c. Pursuant to the provisions of California Health and Safety Code section 13842, the Board of Directors of the Reorganized District shall remain seven members. Commencing with the election of Directors in November 2022, the Reorganized District shall transition to election by divisions pursuant to California Health and Safety Code section 13846 et seq.
- d. All assets, unrestricted, restricted or fiduciary, held by the Parties shall be transferred to and become assets of the Reorganized District. The Reorganized District shall be the successor agency to FFPD, and the CSA-40 IRP areas.
- e. The Parties request a determination by LAFCO that no property tax allocation agreement is required for the transfer of the taxes, assets and equipment of FFPD, and the CSA-40 IRP areas to the Reorganized District.
- f. The Parties request a determination by Sonoma LAFCO that the initial appropriation limit for the Reorganized District shall be the total of the combined existing appropriation limits of SCFD, FFPD, and the CSA-40 IRP areas, as well as the anticipated increased tax collections projected from the extension of the SCFD’s special tax throughout the Reorganized District.
- g. All liabilities of FFPD, and the CSA-40 IRP areas shall be transferred to and become liabilities of the Reorganized District.
- h. The effective date of the Proposed Reorganization shall be the date of recordation of the certificate of completion of reorganization as provided by Government Code section 57200 et seq.
- i. Distribution of Services: The Board of Directors of the Reorganized District will authorize an annual work plan for services throughout the Reorganized District.

WHEREAS, the Parties hereby consent to the Proposed Reorganization without election by the registered voters within the respective Districts; and

WHEREAS, the Parties' find that the Proposed Reorganization appears to be categorically exempt on the California Environmental Quality Act ("CEQA") by virtue of section 15320 of the State CEQA Guidelines ("Class 20 Exemption") because the Proposed Reorganization is a reorganization of a local government agencies where the changes do not change the geographical area in which previously existing powers are exercised.

NOW, THEREFORE, the Boards of Directors of Sonoma County Fire District and the Forestville Fire Protection District hereby find, determine, declare, resolve and order as follows:

1. The foregoing recitals are true and correct and are adopted as set forth herein.
2. Sonoma LAFCO is requested to undertake proceedings for the Proposed Reorganization according to the terms and conditions stated above and in the manner provided in the Cortese-Knox- Hertzberg Act.
3. The President of the Board of Directors of each Party is authorized and directed to execute this Concurrent Resolution and any other documents as Sonoma LAFCO may reasonably request to accomplish the Proposed Reorganization initiated by this Concurrent Resolution.
4. The Fire Chief of the Sonoma County Fire District, and/or his designee, shall be, and is hereby, authorized and directed to perform any and all acts required to complete the Proposed Reorganization initiated by this Concurrent Resolution, including, but not limited to, preparation and coordination of the application to Sonoma LAFCO, and preparation and filing of Notice of Exemption with the County Clerk in accordance with the provisions of CEQA and the State CEQA guidelines.

This Concurrent Resolution can be executed in counterpart and is effective from the latest date of execution shown below.

SONOMA COUNTY FIRE DISTRICT:

Passed, approved and adopted at a regular meeting of the Board of Directors of the Sonoma County Fire District by the following votes. Passed and adopted this _____, 2020.

President, Board of Directors


Ayes: _____
Noes: _____
Absent: _____

CERTIFICATION:

Clerk of the Board of Directors

FOESTVILLE FIRE PROTECTION DISTRICT:

Passed, approved and adopted at a regular meeting of the Board of Directors of the Forestville Fire Protection District by the following votes. Passed and adopted this 11th day of August, 2020.



President, Board of Directors

Ayes: 5
Noes: 0
Absent: 0

CERTIFICATION:



Clerk of the Board of Directors



**Sonoma County Fire District
Board of Directors
Staff Report**

Date: September 1, 2020

Topic: Resolution #2020-19: Delegation of Authority – Other Post Employment Benefit (OPEB) Prefunding Plan- California Employees Retiree Benefit Trust (CERBT)

Recommendation:

Staff recommends that the Board designate the positions of Fire Chief, Deputy Fire Chief and Finance Manager as authorized representatives for the District's CalPERS Other Post Employment Prefunding Plan- CERBT account.

Financial Impact:

No financial impact. The CERBT account balance is reported out monthly on the District's Financial Reporting on the Balance Sheet Report.

Background:

The Rincon Valley Fire Protection District had established a CERBT account to prefund it's OPEB liability.

To transfer the trust balance into the Sonoma County Fire District name, CalPERS requires that the Board of Directors designate which district representatives are authorized to request disbursements.



**DELEGATION OF AUTHORITY
TO REQUEST DISBURSEMENTS**

**RESOLUTION
OF THE**

Board of Directors

(GOVERNING BODY)

OF THE

Sonoma County Fire District

(NAME OF EMPLOYER)

The **Board of Directors** delegates to the incumbents
(GOVERNING BODY)

in the positions of **Fire Chief** and
(TITLE)

Deputy Fire Chief and/or
(TITLE)

Finance Manager authority to request on
(TITLE)

behalf of the Employer disbursements from the Other Post Employment Prefunding Plan and to certify as to the purpose for which the disbursed funds will be used.

By _____

Title **Board President**

Witness _____

Date _____

Resolution No. 2020-20
September 1, 2020

A RESOLUTION OF THE GOVERNING BOARD OF THE SONOMA COUNTY FIRE DISTRICT, COUNTY OF SONOMA, STATE OF CALIFORNIA, DECLARING WEEDS AND RUBBISH UPON OR IN FRONT OF CERTAIN PROPERTIES WITHIN THE SONOMA COUNTY FIRE DISTRICT TO BE A PUBLIC NUISANCE; AND DIRECTING THE SONOMA COUNTY FIRE DISTRICT TO GIVE NOTICE THEREOF PURSUANT TO SECTION 14892 OF THE HEALTH AND SAFETY CODE

WHEREAS, it is the determination of the Board of Directors of the Sonoma County Fire District that certain weeds growing upon the streets and sidewalks and upon or in front of private property within the Sonoma County Fire District which bear seeds of a wingy or downy nature, and other weeds which have attained or will attain a full, natural growth in height in excess of four inches, and vines which are closer than twenty feet to any combustible building, fence or other combustible improvements whatsoever, are noxious and dangerous, and that the same constitute a public nuisance; and

WHEREAS, It is the further determination of the Board of Directors of the Sonoma County Fire District that rubbish consisting of all combustible or noncombustible waste, refuse and worthless or useless articles of property left, deposited or abandoned on those parcels within the Sonoma County Fire District in Exhibit "A" (attached) in such fashion and in such quantity as to be unhealthful, dangerous to persons, or so as to interfere with the abatement of weeds under this article, be and the same are hereby declared to constitute a public nuisance;

NOW, THEREFORE, BE IT RESOLVED by the Board of Directors of the Sonoma County Fire District that such weeds and rubbish as herein above described now growing or situated upon the streets or sidewalks or upon or in front of private property within the Sonoma County Fire District and identified in Exhibit "A" (attached) constitute and are hereby declared to be a public nuisance; and

BE IT FURTHER RESOLVED that the Sonoma County Fire District is hereby authorized to give notice directing the abatement of such nuisances in accordance with the provisions of Section 14892 of the Health and Safety Code, which notice shall contain the time and place for hearing objections as herein set forth.

THE FOREGOING RESOLUTION was introduced by Director _____, who moved its adoption, seconded by Director _____, and adopted by the following vote:

Director Briare ____, Director Treanor ____, Director So ____, Director Hamann ____
Director Nelson ____, Director Klick ____, Director Tognozzi ____

WHEREUPON, the President declared the foregoing resolution adopted, and

SO ORDERED.

ATTEST:

Kathy Washington
Secretary of the Board

Parcel Number	Site Address	City	Date Sent
029 151 024	3577 Deer Trail Court	Santa Rosa	4/28/2020
058 300 019	770 Jean Marie Dr	Santa Rosa	5/22/2020
164 440 007	8770 Starr Rd	Windsor	5/26/2020
161 430 001	863 Foothill Dr	Windsor	5/28/2020
067 050 025	5770 Heights rd	Santa Rosa	6/4/2020
067 050 008	5890 Heights rd	Santa Rosa	6/4/2020
066 022 025	1383 Gumview Road	Windsor	6/8/2020
058 232 005	161 Wembley ct	Santa Rosa	6/8/2020
058 232 017	4590 Lambert Dr	Santa Rosa	6/8/2020
066 450 006	1009 Robbie Way	Windsor	6/8/2020
067 050 006	5940 Heights rd	Santa Rosa	6/8/2020
067 040 020	5779 Crystal Dr	Santa Rosa	6/9/2020
006 170 030	476 Ginny Drive	Windsor	6/9/2020
029 160 005	4176 Parker Hill rd	Santa Rosa	6/9/2020
044 091 060	3379 Petaluma Hill rd	Santa Rosa	6/9/2020
044 091 059	3375 Petaluma Hill rd	Santa Rosa	6/9/2020
066 030 034	1330 Gumview Rd	Windsor	6/10/2020
049 240 026	3981 Jansen	Santa Rosa	6/10/2020
163 180 002	310 Pleasant Ave	Santa Rosa	6/10/2020
071 310 021	15869 Sunshine Ct	Guerneville	6/10/2020
071 310 006	15964 Birkhofer Rd	Guerneville	6/10/2020
071 310 007	15960 Birkhofer Rd	Guerneville	6/10/2020
086 100 020	11300 Los Amigos rd	Healdsburg	6/10/2020
164 140 001	7700 Windsor Rd	Windsor	6/10/2020
030 180 002	1300 Calistoga Rd	Santa Rosa	6/10/2020
067 270 026	1670 Mark West Springs Rd	Santa Rosa	6/10/2020
069 190 006	16490 Watson rd	Guerneville	6/10/2020
069 190 026	16481 Watson rd	Guerneville	6/10/2020
034 050 016	2815 Alton In	Santa Rosa	6/10/2020
071 191 036	16620 Guerneville Rd	Guerneville	6/10/2020
067 190 010	1244 Riebli Rd	Santa Rosa	6/10/2020
044 111 003	E Bellevue	Sant Rosa	6/10/2020
059 020 022	2702 Fulton Rd	Fulton	6/10/2020
079 190 021	7016 Fought Rd	Santa Rosa	6/10/2020
049-190-020	4600 Mount Taylor Dr	Santa Rosa	6/10/2020
029 233 002	4187 Bayberry Dr	Santa Rosa	6/11/2020
034 043 005	2390 San Miguel Ave	Santa Rosa	6/11/2020
067-040-003	5665 Crystal Drive	Santa Rosa	6/12/2020
067-060-014	5500 Crystal Drive	Santa Rosa	6/12/2020
182-010-004	3235 JAYLEE DR	Santa Rosa	6/12/2020
066 040 008	1144 Starr View Dr	Windsor	6/15/2020
072 021 028	16000 Solaridge Rd.	Guerneville	6/15/2020
072 021 028	16000 Solaridge Rd.	Guerneville	6/15/2020
060 020 087	5579 Sebastopol Rd.	Sebastopol	6/15/2020
044 220 008	4407 Petaluma Hill Rd	Santa Rosa	6/15/2020
067 020 006	1540 Redwood Hill rd	Santa Rosa	6/15/2020

067 020 031	1600 Redwood Hill rd	Santa Rosa	6/15/2020
049 101 057	4470 Pressley Rd	Penngrove	6/15/2020
039 012 060	5400 Fought Rd	Santa Rosa	6/15/2020
086 140 027	11889 Creek Hollow	Healdsburg	6/15/2020
086 140 033	11845 Creek Hollow	Healdsburg	6/15/2020
086 140 043	11747 Creek Hollow	Healdsburg	6/15/2020
086 140 044	11703 Creek Hollow	Healdsburg	6/15/2020
086 150 013	12002 Creek Hollow	Healdsburg	6/15/2020
086 150 053	11710 Creek Hollow	Healdsburg	6/15/2020
086 150 002	1173 Red Tail Rd	Healdsburg	6/15/2020
086 150 003	1159 Red Tail Rd	Healdsburg	6/15/2020
086 150 004	1125 Red Tail Rd	Healdsburg	6/15/2020
086 150 005	1091 Red Tail Rd	Healdsburg	6/15/2020
086 150 006	1057 Red Tail Rd	Healdsburg	6/15/2020
086 150 008	989 Red Tail Rd	Healdsburg	6/15/2020
086 150 009	955 Red Tail Rd	Healdsburg	6/15/2020
086 150 010	921 Red Tail Rd	Healdsburg	6/15/2020
086 150 012	863 Red Tail Rd	Healdsburg	6/15/2020
086 150 014	1186 Red Tail Rd	Healdsburg	6/15/2020
086 150 015	1142 Red Tail Rd	Healdsburg	6/15/2020
086 150 016	1118 Red Tail Rd	Healdsburg	6/15/2020
086 150 017	1084 Red Tail Rd	Healdsburg	6/15/2020
086 150 018	1050 Red Tail Rd	Healdsburg	6/15/2020
086 150 019	1016 Red Tail Rd	Healdsburg	6/15/2020
086 150 020	982 Red Tail Rd	Healdsburg	6/15/2020
086 150 021	948 Red Tail Rd	Healdsburg	6/15/2020
086 150 022	914 Red Tail Rd	Healdsburg	6/15/2020
086 150 023	880 Red Tail Rd	Healdsburg	6/15/2020
086 150 024	Red Tail Rd	Healdsburg	6/15/2020
086 150 025	882 Red Tail Rd	Healdsburg	6/15/2020
086 150 026	1096 Red Tail Rd	Healdsburg	6/15/2020
086 150 059	1023 Red Tail Rd	Healdsburg	6/15/2020
086 150 060	887 Red Tail Rd	Healdsburg	6/15/2020
086 160 014	1125 Red Tail Rd	Healdsburg	6/15/2020
086 140 001	795 Red Tail Rd	Healdsburg	6/15/2020
086 140 002	761 Red Tail Rd	Healdsburg	6/15/2020
086 140 003	727 Red Tail Rd	Healdsburg	6/15/2020
086 140 004	693 Red Tail Rd	Healdsburg	6/15/2020
086 140 005	659 Red Tail Rd	Healdsburg	6/15/2020
086 140 011	788 Red Tail Rd	Healdsburg	6/15/2020
086 140 012	754 Red Tail Rd	Healdsburg	6/15/2020
086 140 013	720 Red Tail Rd	Healdsburg	6/15/2020
086 140 014	686 Red Tail Rd	Healdsburg	6/15/2020
086 140 015	652 Red Tail Rd	Healdsburg	6/15/2020
086 150 001	1197 Red Tail Rd	Healdsburg	6/15/2020
086 120 054	519 Horse Barn Rd	Healdsburg	6/15/2020
086 120 055	487 Horse Barn Rd	Healdsburg	6/15/2020

086 140 006	625 Horse Barn Rd	Healdsburg	6/15/2020
086 140 009	543 Horse Barn Rd	Healdsburg	6/15/2020
086 140 010	529 Horse Barn Rd	Healdsburg	6/15/2020
086 140 017	584 Horse Barn Rd	Healdsburg	6/15/2020
086 140 018	514 Horse Barn Rd	Healdsburg	6/15/2020
086 140 047	502 Horse Barn Rd	Healdsburg	6/15/2020
086 140 049	567 Horse Barn Rd	Healdsburg	6/15/2020
086 140 021	11997 Windy Hollow Rd	Healdsburg	6/15/2020
086 140 022	11963 Windy Hollow Rd	Healdsburg	6/15/2020
086 140 023	11929 Windy Hollow Rd	Healdsburg	6/15/2020
086 140 029	11988 Windy Hollow Rd	Healdsburg	6/15/2020
086 140 051	11901 Windy Hollow Rd	Healdsburg	6/15/2020
086 140 052	11954 Windy Hollow Rd	Healdsburg	6/15/2020
086 140 053	11920 Windy Hollow Rd	Healdsburg	6/15/2020
086 140 039	778 Fitchview Ln	Healdsburg	6/15/2020
086 140 040	744 Fitchview Ln	Healdsburg	6/15/2020
086 140 041	710 Fitchview Ln	Healdsburg	6/15/2020
086 140 042	676 Fitchview Ln	Healdsburg	6/15/2020
086 140 050	642 Fitchview Ln	Healdsburg	6/15/2020
086 150 050	870 Fitchview Ln	Healdsburg	6/15/2020
086 150 051	836 Fitchview Ln	Healdsburg	6/15/2020
086 150 052	802 Fitchview Ln	Healdsburg	6/15/2020
086 140 019	787 Dragonfly Ln	Healdsburg	6/15/2020
086 140 020	753 Dragonfly Ln	Healdsburg	6/15/2020
086 140 028	746 Dragonfly Ln	Healdsburg	6/15/2020
086 150 027	1049 Dragonfly Ln	Healdsburg	6/15/2020
086 150 028	1015 Dragonfly Ln	Healdsburg	6/15/2020
086 150 029	981 Dragonfly Ln	Healdsburg	6/15/2020
086 150 030	947 Dragonfly Ln	Healdsburg	6/15/2020
086 150 031	919 Dragonfly Ln	Healdsburg	6/15/2020
086 150 032	883 Dragonfly Ln	Healdsburg	6/15/2020
086 150 033	855 Dragonfly Ln	Healdsburg	6/15/2020
086 150 034	821 Dragonfly Ln	Healdsburg	6/15/2020
086 150 041	848 Dragonfly Ln	Healdsburg	6/15/2020
086 150 042	814 Dragonfly Ln	Healdsburg	6/15/2020
086 150 058	872 Dragonfly Ln	Healdsburg	6/15/2020
086 140 034	752 Milk Bard Rd	Healdsburg	6/15/2020
086 140 035	718 Milk Bard Rd	Healdsburg	6/15/2020
086 140 054	616 Milk Bard Rd	Healdsburg	6/15/2020
086 150 035	1065 Milk Bard Rd	Healdsburg	6/15/2020
086 150 044	956 Milk Bard Rd	Healdsburg	6/15/2020
086 150 045	912 Milk Bard Rd	Healdsburg	6/15/2020
086 150 046	878 Milk Bard Rd	Healdsburg	6/15/2020
086 150 055	941 Milk Bard Rd	Healdsburg	6/15/2020
086 150 057	933 Milk Bard Rd	Healdsburg	6/15/2020
086 150 061	990 Milk Bard Rd	Healdsburg	6/15/2020
086 150 062	1021 Milk Bard Rd	Healdsburg	6/15/2020

086 150 063	844 Milk Bard Rd	Healdsburg	6/15/2020
034 073 044	1435 Jahn Dr	Santa Rosa	6/16/2020
067 330 006	900 Quietwater Ridge Rd	Santa Rosa	6/16/2020
067 320 024	965 Quietwater Ridge Rd	Santa Rosa	6/16/2020
130 520 001	4890 Hall Rd	Santa Rosa	6/16/2020
066 060 048	9608 Starr Rd	Windsor	6/17/2020
059 250 051	Brickway Blvd	Santa Rosa	6/17/2020
059 250 052	Brickway Blvd	Santa Rosa	6/17/2020
059 271 006	Brickway Blvd	Santa Rosa	6/17/2020
059 240 073	195 Aviation Blvd	Santa Rosa	6/17/2020
181 350 022	181 350 022 Montecito ave	Santa Rosa	6/18/2020
039-230-032	4875 Carriage Ln	Santa Rosa	6/18/2020
079 140 005	5773 Shiloh Rdg	Santa Rosa	6/19/2020
080 140 007	Shiloh Ridge	Santa Rosa	6/19/2020
079 140 010	5905 Shiloh Ridge Rd	Santa Rosa	6/19/2020
079 140 008	445 Shiloh Valley Ct	Santa Rosa	6/19/2020
049 050 022	5455 Bennett Valley Rd	Santa Rosa	6/19/2020
035 081 026	1050 Merced Ave	Santa Rosa	6/19/2020
130 331 010	5353 Oak Meadow Dr	Santa Rosa	6/19/2020
130 331 010	5353 Oak Meadow Dr	Santa Rosa	6/19/2020
039 352 025	5450 Corbett Cir	Santa Rosa	6/19/2020
039 200 013	1020 Wikiup Dr	Santa Rosa	6/25/2020
039 200 014	1058 Wikiup Dr	Santa Rosa	6/25/2020
039 180 006	1064 Wikiup Dr	Santa Rosa	6/25/2020
045 021 005	91 Mountain View ave	Rohnert Park	6/25/2020
067 280 009	1687 Mark West Springs rd	Santa Rosa	6/25/2020
045 290 093	171 Connely Ln	Santa Rosa	6/25/2020
086 160 008	Limerick Ln	Healdsburg	6/25/2020
030 291 012	923 Los Alamos rd	Santa Rosa	6/25/2020
030 291 001	931 Wildwood Trail	Santa Rosa	6/25/2020
059 070 049	1125 Raplee Terrace	Fulton	6/25/2020
066 343 001	920 Starr View Dr	Windsor	6/25/2020
049 101 053	Pressley Rd	Santa Rosa	6/25/2020
039 061 003	5263 Carriage Ln	Santa Rosa	6/29/2020
164 550 014	7321 Conde Ln	Windsor	6/29/2020
039 040 040	201 Wikiup Dr	Santa Rosa	7/2/2020
029 070 034	124 Meadowcroft Way	Santa Rosa	7/2/2020
049 220 019	4359 Raymond Way	Santa Rosa	7/2/2020
067 150 026	5030 Wilshire Dr	Santa Rosa	7/2/2020
163 011 036	6405 OLR	Windsor	7/2/2020
079 230 004	10577 Chalk Hill rd	Santa Rosa	7/2/2020
066 030 010	1486 Gumview	Windsor	7/3/2020
039 390 019	5242 Faught Rd	Larkfield	7/3/2020
079 140 008	445 Shiloh Vally	Santa Rosa	7/5/2020
079 140 005	5773 Shiloh Ridge	Santa Rosa	7/5/2020
079 140 010	5905 Shiloh Ridge	Santa Rosa	7/5/2020
079 140 006	377 Shiloh Valley Ct	Santa Rosa	7/5/2020

071 150 021 000	13555 hwy 116	Guerneville	7/6/2020
034 060 011	3111 Piner Rd	santa Rosa	7/6/2020
044-111-003	E BELLEVUE AVE-3150 Education Dr	Santa Rosa	7/7/2020
034 042 081	Alton Lane	Santa Rosa	7/8/2020
034 042 088	Alton Lane	Santa Rosa	7/8/2020
058 243 005	67 Ursuline Rd	Santa Rosa	7/8/2020
058 262 001	69 Brighton Ct	Santa Rosa	7/8/2020
058 2241 015	4530 Brighton dr	Santa Rosa	7/8/2020
058 243 006	77 Ursuline Rd	Santa Rosa	7/8/2020
058 243 004	53 Ursuline Rd	Santa Rosa	7/8/2020
058 242 005	139 Ursuline Rd	Santa Rosa	7/8/2020
058 241 010	190 Dorchester North Ct	Santa Rosa	7/8/2020
067 230 004	910 Sundown Trail	Santa Rosa	7/8/2020
058 252 002	21 Chelsea Dr	Santa Rosa	7/8/2020
067 011 027	Meadow Vista Trail	Mark West Meadows	7/8/2020
067 011 040	5403 Blue ridge Trail	Santa Rosa	7/8/2020
067 011 039	5415 Blue Ridge Trail	Santa Rosa	7/8/2020
067 011 008	5439 Blue Ridge Trail	Santa Rosa	7/8/2020
067 011 026	5441 Buttercup Dr	Santa Rosa	7/8/2020
067 011 013	5453 Buttercup Dr	Santa Rosa	7/8/2020
067 011 014	5429 Buttercup Dr	Santa Rosa	7/8/2020
067 011 016	5405 Buttercup Dr	Santa Rosa	7/8/2020
067 011 007	5374 Blue Ridge Trail	Santa Rosa	7/8/2020
067 011 006	5386 Blue Ridge Trail	Santa Rosa	7/8/2020
067 011 012	1055 Meadow Vista Trail	Santa Rosa	7/8/2020
067 011 005	1020 Meadow Vista Trail	Santa Rosa	7/8/2020
067 011 002	5412 Meadow Vista Trail	Santa Rosa	7/8/2020
067 011 001	5400 Meadow Vista Trail	Santa Rosa	7/8/2020
067 050 009	5800 Heights Rd	Santa Rosa	7/8/2020
067 121 010	1455 Mark West Springs rd	Santa Rosa	7/10/2020
067 121 048	1412 Lorraine Way	Santa Rosa	7/10/2020
067 121 038	1420 Michelle Way	Santa Rosa	7/10/2020
067 121 077	1398 Michelle Way	Santa Rosa	7/10/2020
067 121 080	1404 Lorraine Way	Santa Rosa	7/10/2020
067 290 005	1495 Lorraine Way	Santa Rosa	7/10/2020
029 180 013	220 Twin Pillar Way S	Santa Rosa	7/10/2020
161 040 015	10071 Old Redwood Hwy	Windsor	7/10/2020
163 021 013	125 Thrushwing Ave	Windsor	7/13/2020
039 100 008	631 Vista Grande Pl	Santa Rosa	7/13/2020
181 020 025	1577 Brush Creek Rd	Santa Rosa	7/13/2020
055 160 032	2875 Bardy Rd	Santa Rosa	7/13/2020
035 081 026	1050 Merced Ave	Santa Rosa	7/13/2020
079 220 011	9334 Chalk Hill Rd	Healdsburg	7/13/2020
059 340 012	5470 Skylane	Santa Rosa	7/13/2020
181 060 001	1633 Manzanita Ave	Santa Rosa	7/13/2020
161 060 011	9654 Dawn Way	Windsor	7/14/2020

059 340 032	5015 Aviation Blvd	Santa Rosa	7/14/2020
059 430 006	Aviation Blvd	Santa Rosa	7/14/2020
059 430 005	Aviation Blvd	Santa Rosa	7/14/2020
059 271 073	Brickway	Santa Rosa	7/14/2020
059 430 007	Aviation Blvd	Santa Rosa	7/14/2020
058 310 030	575 Jean Marie Dr	Santa Rosa	7/15/2020
058 310 022	623 Jean Marie Dr	Santa Rosa	7/15/2020
058 300 070	170 Pacific Heights	Santa Rosa	7/15/2020
058 310 050	249 Pacific Heights	Santa Rosa	7/15/2020
039 390 019	5243 Faught rd	Santa Rosa	7/15/2020
134 161 045	792 Todd rd	Santa Rosa	7/15/2020
049 310 006	3427 Holland Dr	Santa Rosa	7/20/2020
130 223 080	392 Piezzi rd	Santa Rosa	7/22/2020
130 471 024	400 Piezzi Rd	Santa Rosa	7/22/2020
029 070 064	100 Meadowcroft Way	Santa Rosa	7/22/2020
067 210 008	1055 Sundown Trl	Santa Rosa	7/22/2020
067 230 021	189 Sundown Ct	Santa Rosa	7/22/2020
029 250 009	3409 Hidden Hills Dr	Santa Rosa	7/22/2020
029 250 015	3401 Hidden Hills Dr	Santa Rosa	7/22/2020
067 011 014	5429 Buttercup	Santa Rosa	7/22/2020
067-121-059	1460 LORRAINE WAY	Santa Rosa	7/23/2020
067-121-022	1258 MICHELE WAY	Santa Rosa	7/24/2020
071-150-021	13555 HWY 116	GUERNEVILLE	7/24/2020
134 092 042	3618 Primrose Ave	Santa Rosa	7/24/2020
030-430-007	1476 LOS ALAMOS RD	Santa Rosa	7/24/2020
030-460-011	5940 COUGAR LN	Santa Rosa	7/27/2020
030-460-005	5980 COUGAR LN	Santa Rosa	7/27/2020
030-460-012	5977 COUGAR LN	Santa Rosa	7/27/2020
030-070-019	1465 LOS ALAMOS RD	Santa Rosa	7/27/2020
030-060-008	COUGAR LN	Santa Rosa	7/27/2020
030-070-037	1980 COUGAR LN	Santa Rosa	7/27/2020
030-070-032	1443 COUGAR LN	Santa Rosa	7/27/2020
183 240 016	628 Speers Rd	Santa Rosa	7/27/2020
067 011 001	5400 Meadow Vista Trail	Santa Rosa	7/27/2020
067 011 002	5412 Meadow Vista Trail	Santa Rosa	7/27/2020
067 011 005	1020 Meadow Vista Trail	Santa Rosa	7/27/2020
067 011 012	1055 Meadow Vista Trail	Santa Rosa	7/27/2020
067 011 003	5424 Spring Rock Ct	Santa Rosa	7/27/2020
067 011 004	5411 Spring Rock Ct	Santa Rosa	7/27/2020
067 011 006	5386 Blue Ridge Trl	Santa Rosa	7/27/2020
067 011 007	5374 Blue Ridge Trl	Santa Rosa	7/27/2020
067 011 008	5439 Blue Ridge Trl	Santa Rosa	7/27/2020
067 011 009	5427 Blue Ridge Trl	Santa Rosa	7/27/2020
067 011 024	5391 Blue Ridge Trl	Santa Rosa	7/27/2020
067 011 039	163 050 024+A2+A1:D27	Santa Rosa	7/27/2020
067 011 040	5403 Blue Ridge Trl	Santa Rosa	7/27/2020

067 011 113	5453 Buttercup Dr	Santa Rosa	7/27/2020
067 011 114	5429 Buttercup Dr	Santa Rosa	7/27/2020
067 011 115	5417 Buttercup Dr	Santa Rosa	7/27/2020
067 011 116	5405 Buttercup Dr	Santa Rosa	7/27/2020
067 011 126	5441 Buttercup Dr	Santa Rosa	7/27/2020
067 011 020	5333 Winding View Trl	Santa Rosa	7/27/2020
067 011 021	5330 Winding View Trl	Santa Rosa	7/27/2020
067 011 022	5342 Winding View Trl	Santa Rosa	7/27/2020
067 011 023	5354 Winding View Trl	Santa Rosa	7/27/2020
067 011 017	1071 Maverick Ct	Santa Rosa	7/27/2020
067 011 018	1059 Maverick Ct	Santa Rosa	7/27/2020
067 011 019	1047 Maverick Ct	Santa Rosa	7/27/2020
067 011 025	1050 Maverick Ct	Santa Rosa	7/27/2020
058 171 009	42 Ramsgate Ct	Santa Rosa	7/27/2020
058 171 011	4635 Old Redwood Hwy	Santa Rosa	7/27/2020
058 171 072	440 Alexander David Ct	Santa Rosa	7/27/2020
	246 Usher Dr	Windsor	7/27/2020
079 230 004	10577 Chalk Hill	Healdsburg	7/27/2020
183 240 016	628 Speers rd	Santa Rosa	7/27/2020
067 070 001	5475 Linda Lane	Santa Rosa	7/28/2020
067 070 007	5505 Linda Lane	Santa Rosa	7/28/2020
067 070 008	5495 Linda Lane	Santa Rosa	7/28/2020
067 080 001	5355 Linda Lane	Santa Rosa	7/28/2020
067 080 003	5347 Linda Lane	Santa Rosa	7/28/2020
067 080 004	5361 Linda Lane	Santa Rosa	7/28/2020
067 080 005	5365 Linda Lane	Santa Rosa	7/28/2020
067 090 001	5467 Linda Lane	Santa Rosa	7/28/2020
067 090 002	5425 Linda Lane	Santa Rosa	7/28/2020
067 090 003	5375 Linda Lane	Santa Rosa	7/28/2020
067 090 004	5347 Linda Lane	Santa Rosa	7/28/2020
067 090 005	5365 Linda Lane	Santa Rosa	7/28/2020
067 090 006	5370 Linda Lane	Santa Rosa	7/28/2020
067 090 007	5373 Linda Lane	Santa Rosa	7/28/2020
067 090 008	5371 Linda Lane	Santa Rosa	7/28/2020
067 100 004	5420 Linda Lane	Santa Rosa	7/28/2020
067 100 006	5450 Linda Lane	Santa Rosa	7/28/2020
067 100 016	5460 Linda Lane	Santa Rosa	7/28/2020
067 130 005	5101 Linda Lane	Santa Rosa	7/28/2020
067 130 006	5101 Linda Lane	Santa Rosa	7/28/2020
067 130 007	5154 Linda Lane	Santa Rosa	7/28/2020
067 130 008	5138 Linda Lane	Santa Rosa	7/28/2020
067 130 009	5343 Linda Lane	Santa Rosa	7/28/2020
067 130 010	5111 Linda Lane	Santa Rosa	7/28/2020
067 130 011	5200 Linda Lane	Santa Rosa	7/28/2020
067 130 012	5130 Linda Lane	Santa Rosa	7/28/2020
067 130 013	5120 Linda Lane	Santa Rosa	7/28/2020
067 130 014	5171 Linda Lane	Santa Rosa	7/28/2020



Sonoma County Fire District Board of Directors
Staff Report

Date: September 1, 2020

Topic: Station 8 Roof Repair Contract

Recommendation:

Authorize the use of a Master Intergovernmental Cooperative Purchasing Agreement with Garland Design and Build Solutions Inc. for the Station 8 Roof Replacement Project per the Garland DBS, Inc Roofing Materials and Services Proposal (Attachment A). Costs not to exceed \$190,000.

Authorize Chief Heine to execute any additional change orders or approve any project related expenses (such as permits) up to a maximum project budget of \$190,000.

Financial Impact:

The Station #8 roof project, in the amount of \$80,000, was included in the Preliminary 2019-2020 Fiscal Year Budget, adopted by the Board on June 18, 2019. Savings from the Station 1 roof project in the amount of \$50,000 could be reallocated to the Station 8 Roof project. The additional funding required is \$60,000. The additional funding is being requested in the 2020-2021 Fiscal Year Final Budget being considered by your Board on September 1, 2020.

Background:

The original plan and budget was for replacing the apparatus bay roof at Station 8. During the inspection it was noted that in addition to the need to replace the apparatus roof, the flat roof over the crew quarters was not WUI compliant and did not meet code requirements. It is staff's recommendation that both roofs be replaced to bring the station compliant with existing codes and to ensure that we have a safe and efficient roof system.

Staff recommends that the Board utilize a Master Intergovernmental Cooperative Purchasing Agreement (MICPA) facilitated by U.S. Communities Governmental Purchasing Alliance (USCGPA) to contract for the SCFD Station #8 (6161 Bennett Valley Road, Santa Rosa) roof repair project. Through this organization competitive solicitation and selection processes were performed, resulting in a Master Agreement that can be utilized by other governmental agencies. Garland Design and Build Solutions Inc. was awarded a master agreement for Roofing Supplies and Services, Waterproofing and Related Projects and Services. To utilize the MICPA through the USCGPA, the District simply needs to join the Alliance.



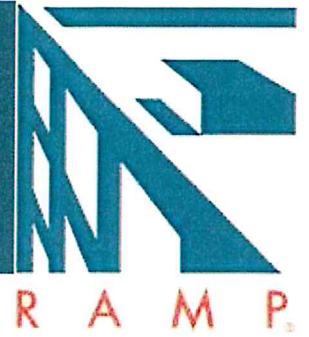
Sonoma County Fire District Board of Directors Staff Report

Our District utilized this contract for the roof replacement on Station 1 in the 2019-2020 fiscal year. A main advantage to utilizing this agreement for our project is the reduced time related to the bid solicitation process which is critical given the desire to complete the roofing project before any winter storms. Additionally, this agreement provides transparent pricing for the roofing products and services.

Staff met with Garland DBS representative Vince Harper, Program Manager to identify the current Station 8 roofing issues and problem areas. Vince Harper then developed a Roof Asset Management Program Report dated May 19, 2020 (Attachment B) which identified the required scope of work for the roof replacement and provided options.

The Garland Company, Inc.

Roof Asset Management Program



5/25/2020 - Sonoma County Fire District - Station 8 - Report Amended

Prepared By

Vince Harper

Prepared For

Captain Rob Bisordi

Table of Contents

<i>Bennett Valley - Station 8 / Facility Summary</i>	3
<i>Bennett Valley - Station 8 / Facility Condition Map</i>	4
<i>Bennett Valley - Station 8 / Engine Bay / Construction Details</i>	5
<i>Bennett Valley - Station 8 / Engine Bay / Roof Section Photo</i>	7
<i>Bennett Valley - Station 8 / Engine Bay / Inspection: Feb 25, 2020</i>	8
<i>Bennett Valley - Station 8 / Engine Bay / Solution: Mar 29, 2020</i>	13
<i>Bennett Valley - Station 8 / Quarters/Kitchen / Construction Details</i>	16
<i>Bennett Valley - Station 8 / Quarters/Kitchen / Inspection: May 19, 2020</i>	18



Facility Summary

Client: Sonoma County Fire District

Facility: Bennett Valley - Station 8



Facility Data

Address 1	6161 Bennett Valley Rd
City	Santa Rosa
State	California
ZIP	95404
Type of Facility	County
Square Footage	6,000

Asset Information

Name	Date Installed	Square Footage	Roof Access
Engine Bay		4,000	Ladder Needed
Quarters/Kitchen	2018	2,800	Ladder Needed

NO LOCATION DATA / CONDITIONS FOUND



Construction Details

Client: Sonoma County Fire District

Facility: Bennett Valley - Station 8

Roof Section: Engine Bay



Information

Year Installed	-	Square Footage	4,000
Slope Dimension	2:12	Eave Height	18
Roof Access	Ladder Needed	System Type	PUF

Assembly

Roof #	Layer Type	Description	Attachment	R-Value	Thickness
1	Deck	Tongue and Groove	Nailed	-	-
1	System	Built Up Roof (BUR)	Hot asphalt	-	-
1	Cover Board	Wood Fiber	Nailed	-	-
1	Membrane	Sprayed in place polyurethane foam (PUF)	Adhesive	-	2"

Details

Perimeter Detail Gravel Stop, Drip Edge

Drain System Internal Roof Drains

Inventory

Inventory Type	Quantity
Soil Stack	3
Passive Vent	3
Equipment Rail	4





Inspection Report

Client: Sonoma County Fire District

Facility: Bennett Valley - Station 8

Report Date: 02/25/2020

Roof Section: Engine Bay

Inspection Information

Inspection Date	02/25/2020	Core Data	No
Inspection Type	Visual Inspection	Leakage	Yes
Deck Conditions	Failed		

Flashing Conditions

Perimeter	Failed	Wall	Good
Projections	Failed	Counterflashing	N/A

Miscellaneous Details

Reglets	N/A	Debris	No
Control Expansion Joints	N/A	Ponding Water	Moderate
Parapet Wall	N/A	Coping Joints	N/A

Overall

Rating	Failed
Condition	<p>The roofing system(s) at Station 8 in Bennett Valley has failed.</p> <p>The original roof is estimated to be an Asphalt Built-Up Roof that was surfaced with gravel. The roof surface was cleared to the membrane then coated with Spray Polyurethane Foam (SPF/ PUF).</p> <p>The building currently has a design flaw at the perimeter, a gravel stop edge keeps water on the roof and there are no water diverters between the drains to move the water off the roof, causing roof deterioration and structure rot.</p> <p>The roof needs to be removed, the perimeter damage repaired, internal drains deleted, gutters installed with a new roofing system that is fire rated for the high fire zone it is in.</p>



Photo 1

The circle shows the drain location, the arrow is pointing to the valley that is caused by the cant strip and perimeter gravel stop edge. It is highly recommended to abandon this concept and utilize perimeter gutters to allow positive drainage and water control.

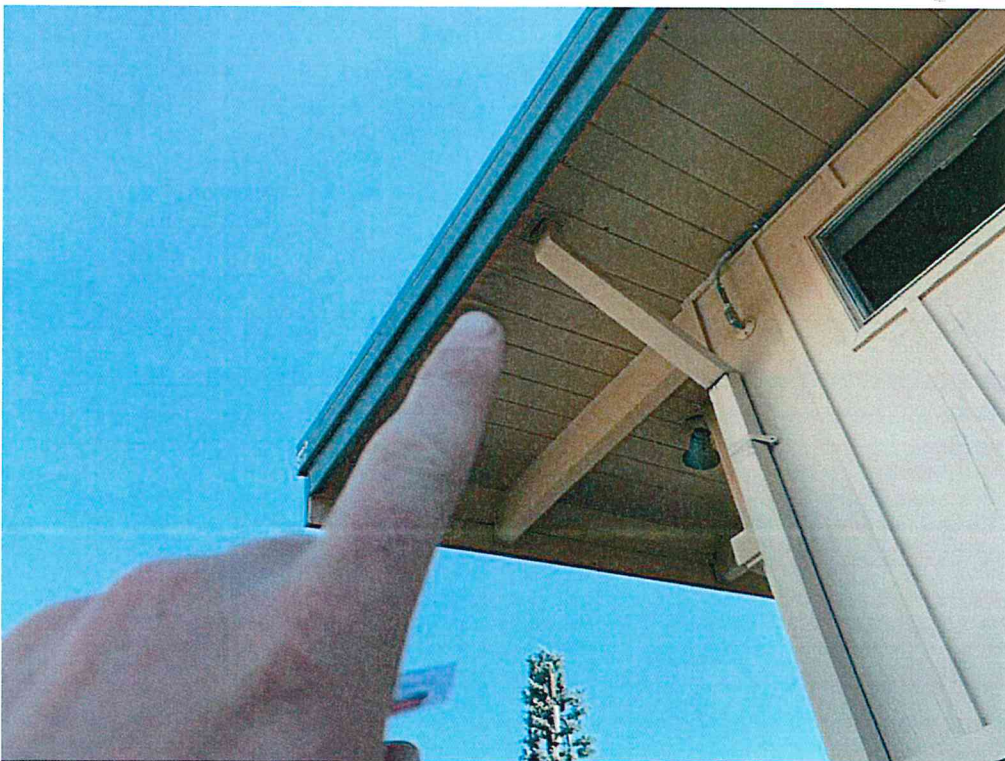


Photo 2

The internal drains were installed incorrectly and have failed. can see the damage to the decking.



Photo 3
severe rot needs replaced in-kind at re-roof.

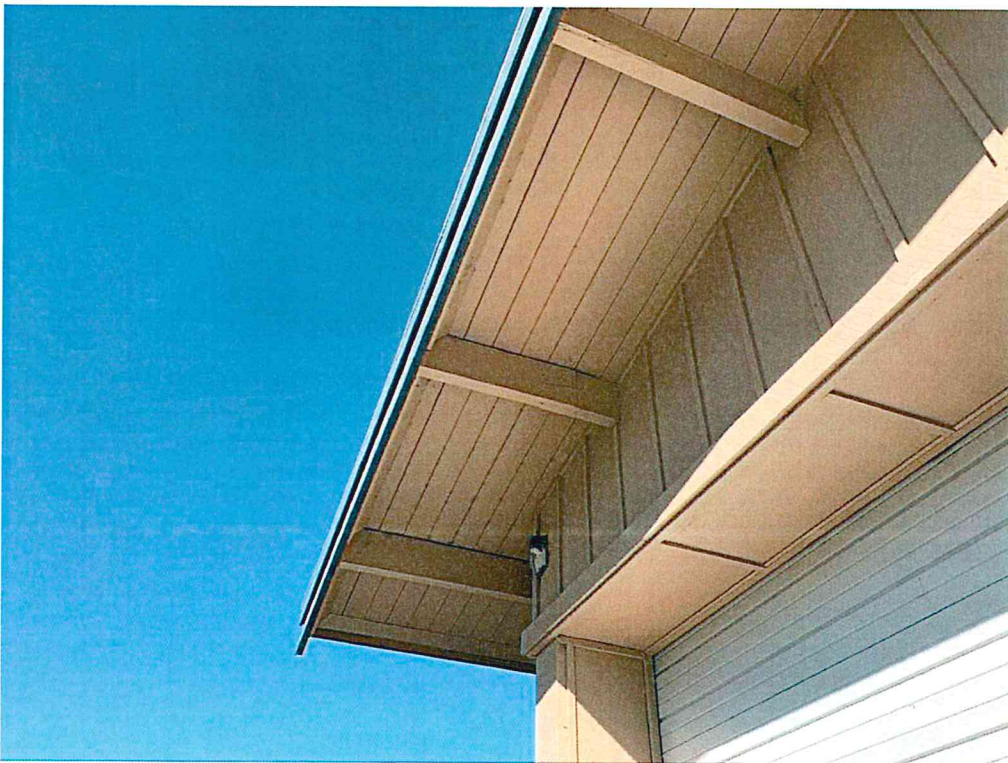


Photo 4
Not all corners have this condition.



Photo 5



Photo 6

More failed perimeters.

Incorrect flashing boots used at stub-ups, these are for asphalt shingle roofs, not BUR's

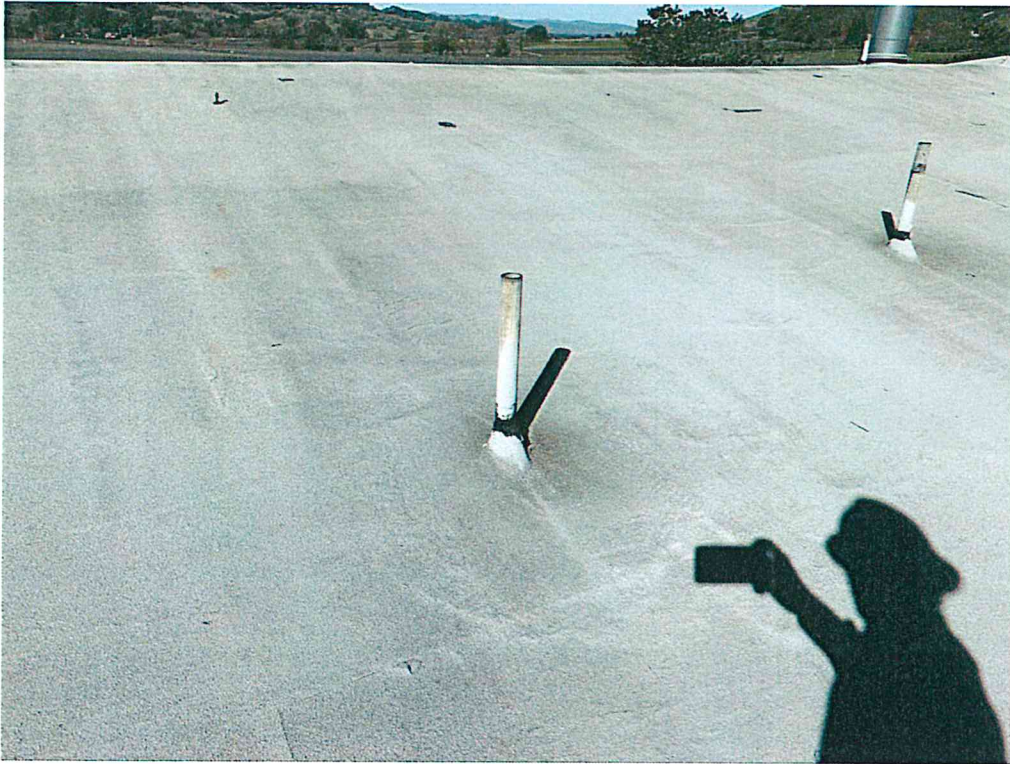


Photo 7

Incorrect flashing boots used at stub-ups, these are for asphalt shingle roofs, not BUR's



Solution Options

Client: Sonoma County Fire District

Facility: Bennett Valley - Station 8

Roof Section: Engine Bay

Retrofit Options

Solution Option:	Retrofit	Action Year:	2020
Square Footage:	4,000	Expected Life (Years):	30
Budget Range:	\$106,000.00 - \$112,000.00		

R-MER LOC SNAP LOCK SEAM ROOF:

Garland inspections 3-days per week.

R-Mer Loc is an architectural/structural standing seam roof system available in several attractive colors. The watertight seam combined with the strength of R-Mer Loc's 18 gauge one-piece clip, makes this an ideal choice whenever consider- ing re-roof applications, mansards and/or new construction.

This system would include the following:

- Custom Engineering and all calculations required, including wind uplift, fastener holding, and Type A Fire Rating.
- Remove the existing metal roof system and dispose of an authorized recycling facility.
- Inspect for rot damage and replace it at a price per sq./ft. and/or ln./ft. per the bid forms, upon approval.
- Install 1/2" Densdeck over the specified insulation system.
- Install one layer of R-Mer Seal Underlayment across the field and flashings.
- Install 22 ga Kynar Coated R-Mer Loc according to engineered design parameters.
- Install a new wall panel system to match the new roof system.
- Touch up any scratches in the coating with the manufactures supplied touch up paint.
- Remove all old caulking at skylights, and install Tuff-Stuff MS sealant. Remove all fasteners and replace them with a new fastener with a rubber grommet.
- Issue Manufacturer's 30-year warranty, including coverage for all trim, flashing, and penetrations associated with the standing seam roof area.

Garland will provide assistance with all aspects if needed, assessment, budget, specifications, pre-bid, preconstruction, minimum 3 days a week inspection during the installation of roofing system, photo analysis and weekly progress reports, final inspection and year inspections.

Replace Options

Solution Option:	Replace	Action Year:	2020
Square Footage:	4,000	Expected Life (Years):	30
Budget Range:	\$108,000.00 - \$115,000.00		

STRESSPLY PLUS WITH STRESSBASE 80 SHEET - New 30-year Roof with New Gutters

Please note the above cost is a budget number, not a firm price. A bid process would determine a firm price. This replacement includes the following and is performed by a contractor:

This system incorporates the best performance qualities of both the single-ply rubber roof system and the multi-layer inorganic built-up roof system. The modified system uses intermittent layers of Type III Hot asphalt adhesives along with a super thick and strong rubber modified/fiberglass reinforced bitumen base and cap sheet. This modified membrane dramatically improves the performance and life expectancy of the roof system.

Advantages:

Multiple layer construction

Longer warranty and life expectancy as compared to single ply and 4 ply roof systems

Highest tensile and tear strengths which helps the roof system to resist splitting and tearing

The thicker membrane provides greater resistance to weather and roof traffic

The modified membrane has self-healing qualities due to the manufacturing process and the low softening point of the SBS modifiers

The system has better low-temperature flexibility, which helps it to withstand deck, building, traffic, and impact during below-freezing temperatures (passed at -37 C)

Modified membranes have excellent slow aging characteristics

Modified systems are very applicator friendly since the membranes are factory manufactured with far more quality control and have been engineered to overcome certain application deficiencies

This system provides the end-user with the least amount of post-installation problems and

The lowest overall life cycle and maintenance costs

This system will include the following:

Scope:

1. Remove and properly dispose of all existing roofing material to the deck.
2. Inspect and repair the decking in-kind, upon approval.
3. Properly clean and prime the deck as required.
4. Attach the base sheet per engineering calculations.
5. Install a 1/2" Primed Wood fiberboard in adhesive.
6. Install one layer of Stressbase 80 in Hot Asphalt Membrane Adhesive.
7. Install one layer of StressPly Plus FR mineral in Hot Asphalt Adhesive.
8. Apply area with One coat of Pyramic Base coat at 1.5 gals per/sq.
9. Apply area with One coat of Pyramic Plus Tile 24 coat at 1.5 goals per/sq.
10. Install 22 ga. R-Mer edge Gutter System.
11. Clean up the project site daily.
12. Provide Customer with Garland 30-year NDL warranty.

The Stressply 2 ply membrane system is a superior Garland product modified with SBS polymers providing this roof

with unparalleled tensile strength and low-temperature flex. The Stressply system also comes with a 30-year non-prorated warranty issued by Garland.

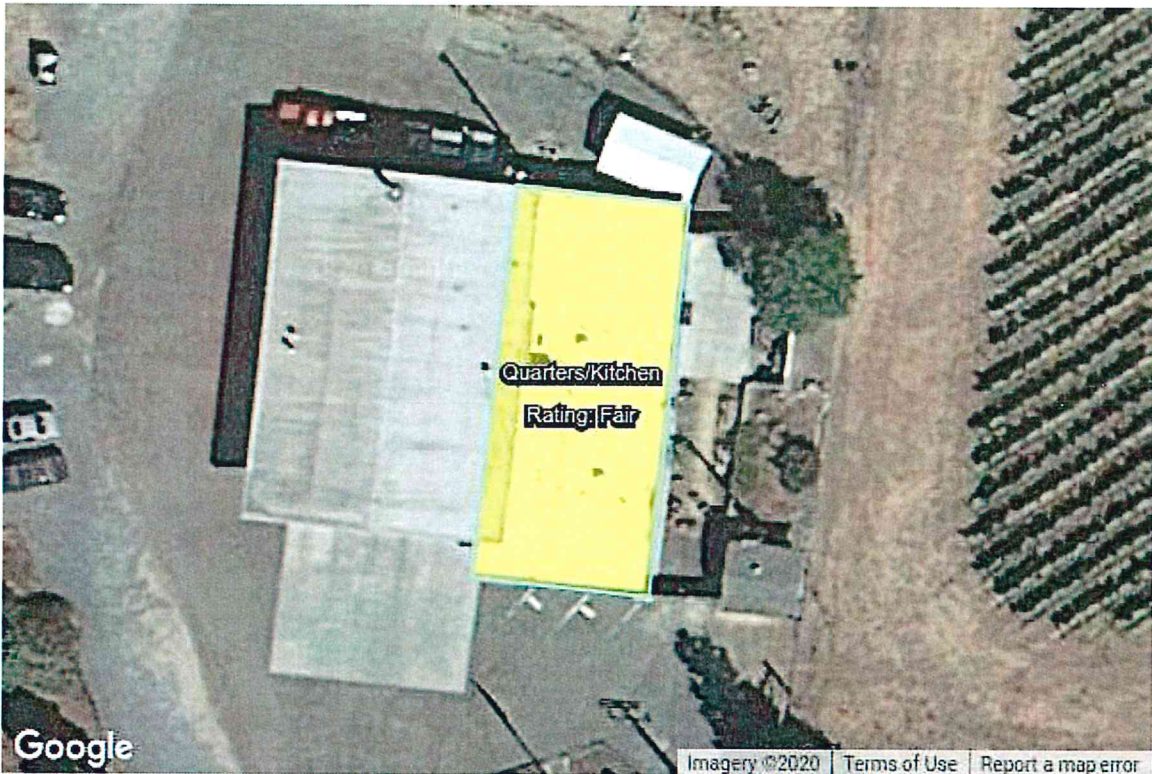


Construction Details

Client: Sonoma County Fire District

Facility: Bennett Valley - Station 8

Roof Section: Quarters/Kitchen



Information

Year Installed	2018	Square Footage	2,800
Slope Dimension	.25:12	Eave Height	12
Roof Access	Ladder Needed	System Type	TPO

Assembly

Roof #	Layer Type	Description	Attachment	R-Value	Thickness
1	Deck	Tongue and Groove	Nailed	-	-
1	Membrane	BUR - 2 ply	Hot asphalt	-	-
1	Cover Board	1/2" Gypsum	Nailed	-	-
1	System	TPO	Mechanically attached	-	-



Inspection Report

Client: Sonoma County Fire District

Facility: Bennett Valley - Station 8

Report Date: 05/19/2020

Roof Section: Quarters/Kitchen

Inspection Information

Inspection Date	05/19/2020	Core Data	Yes
Inspection Type	Core Analysis	Leakage	No
Deck Conditions	Unknown		

Flashing Conditions

Perimeter	Poor	Wall	Fair
Projections	Failed	Counterflashing	Failed

Miscellaneous Details

Reglets	Good	Debris	No
Control Expansion Joints	N/A	Ponding Water	Moderate
Parapet Wall	Fair	Coping Joints	N/A

Perimeter

Rating	Poor
Condition	Ponding water at the perimeter

Field

Rating	Good
Condition	

Penetrations

Rating	Poor
Condition	Improper Flashing Installation

Drainage

Rating Failed

Condition Water is not draining off of the roof

Overall

Rating Fair

Condition UPDATE: 5-22-2020 - Further Core Tests taken at the job walk to confirm that the roof did not have a Class A. Tests show that a Class A coverboard was present. At the test sample location for the Asbestos test, the coverboard must have been taken or not replaced at the time of the test. I checked this location after the fact. I wanted to make sure it was required before proceeding and had the correct material with me to patch the roof, so further testing was performed.

The roof has a Single Ply Overlay that only looks to be a couple of years old. Single-ply roofing is a very low-quality roof system, designed for buildings that need a low cost, short term(10-15 years) most commonly found on buildings with shorter-term ownership lengths.



Photo 1

The black material is the location of the Asbestos Test. I performed more core testing next to this location to confirm. Found that there WAS a Class A coverboard in place.



Photo 2

All locations patched with a compatible material to the single ply.



Photo 3

The core cut location where the asbestos sample was taken was still not cured upon inspection.

The core clearly shows that the cant strip used to transition on the roofs overhang is Wood Fiberboard.

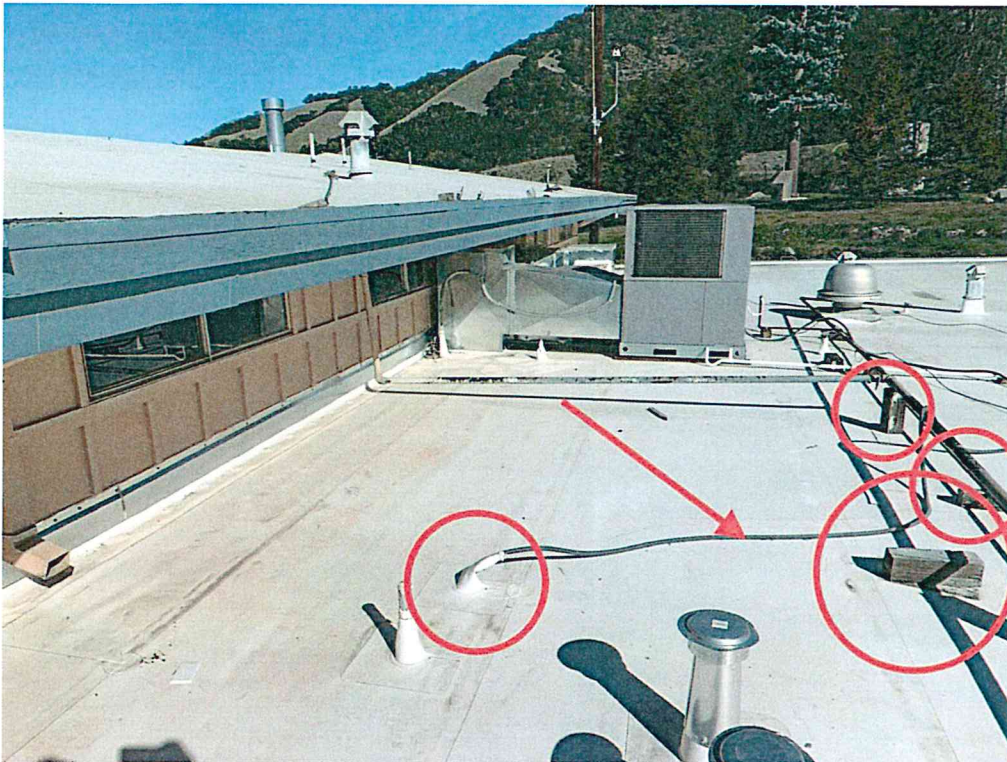


Photo 4

1. Gas Pipe not supported and strapped in with proper supports(Rubber block - Dura-block) and fastened. The Building code calls for a fixed equipment support 20' O.C. and floating blocks 7' O.C.
2. The electrical line is flex line throughout. Code calls for a 12" rigid riser, then to flex line. Flashing is incorrect and not a long term solution.
3. Several wire runs not in conduits, maybe CAT-5(Telecom) Wire.

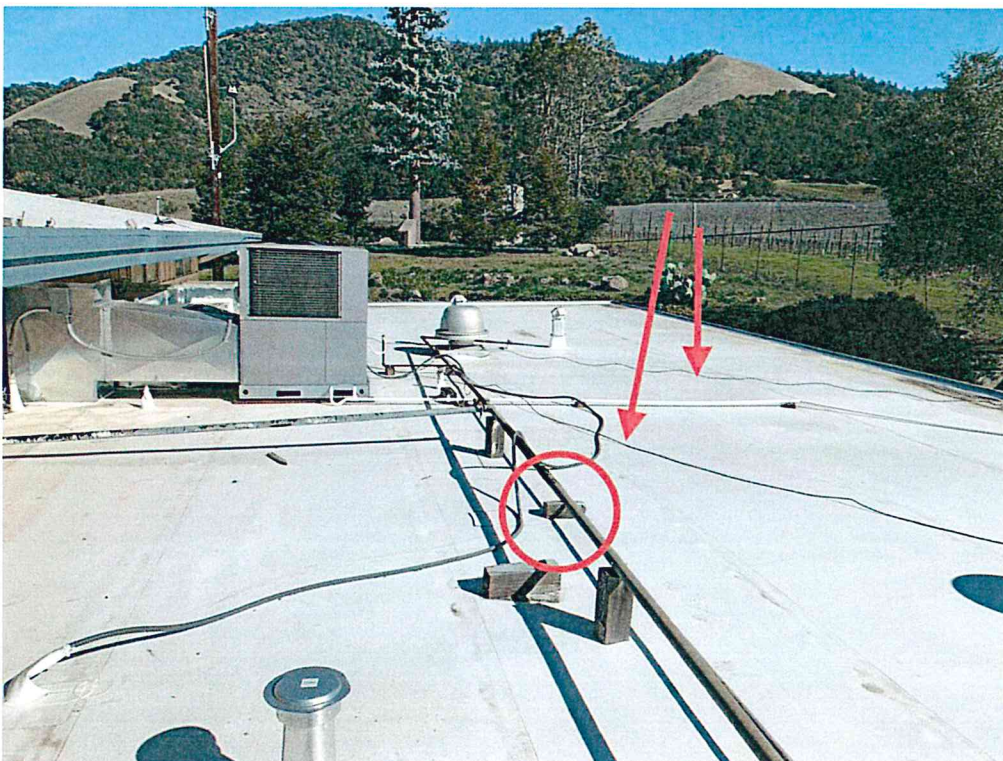


Photo 5



Photo 6

Can see how bad the water ponds due to poor install of re-roof.. Consider removing internal drains and adding a perimeter gutter on the outside. At re-roof, I will ensure positive drainage to the drains with appropriate installation.

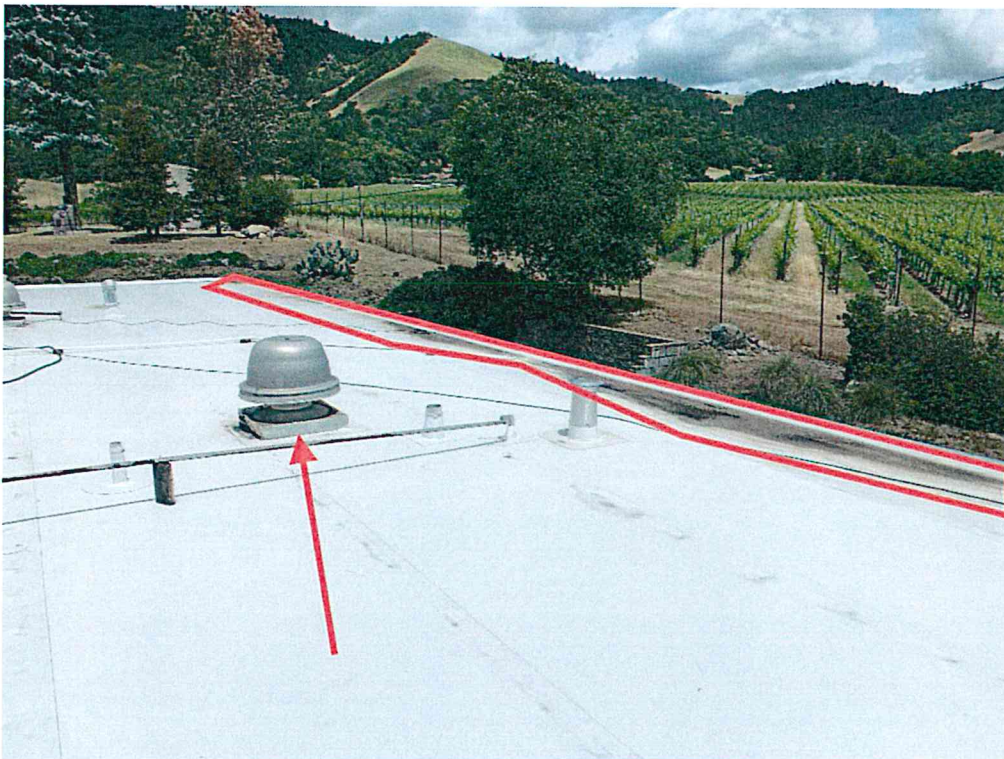


Photo 7

Ponding Water.

All flashings need to be on a minimum of 8" high curb per NRCA & Building code. All units on the roof need to be installed correctly.

Sonoma County Fire District Emergency Medical Services Transport Billing Hardship Policy

PURPOSE:

To establish a policy that allows the modifying of ambulance transport fees based on current year Department of Health and Human Service Poverty guidelines.

SCOPE:

As authorized by Health and Safety Code sections 13917 and 13919, this policy pertains to all residents transported by the Sonoma County Fire District. Resident is defined as any person living within or taxpayers of the Sonoma County Fire District boundaries (refer to Exhibit A).

Transported individual must **not** have been injured while involved in the commission of criminal activity.

Each resident, as defined above, may request one (1) hardship modification per consecutive twelve (12) month period.

PREFACE:

The charges for EMS transport billing may be modified, based upon financial hardship, as determined by the Sonoma County Fire District. These procedures will ensure a just and fair evaluation of a hardship waiver request and will establish an audit trail for future use.

PROCEDURES:

- 1) *No one will EVER be denied necessary medical transport service due to either their inability to pay or a lack of insurance.*
- 2) Every effort will be made to collect from insurance for payment; after insurance makes payment, the District will attempt to collect remaining balance from patient.
- 3) Sonoma County Fire District will address cases of financial hardship on an individual basis.
- 4) Patients who are unable to pay their co-pays, deductibles, or who are uninsured, unemployed, homeless, or for other reasons unable to make payments may request a financial hardship review of their transport charge. Patients, or their designee, shall complete the "Request for Transport Fee Hardship Fee Modification Form" The form may be requested from Wittman Enterprises, LLC by calling (800) 772-6552 or by mail to Wittman Enterprises, LLC 11093 Sun Center Drive, Rancho Cordova, CA 95670.
- 5) This fee modification application will be forwarded to the client's appointed administrator or designee for review and decision. The Board of Directors (or their appointed designee) for the Sonoma County Fire District will make a final decision that will be noted on the form. The Board of Directors (or their appointed designee) may waive all charges, reduce the charges, establish a payment plan or deny the request. All final resolutions will be noted on the form.
- 6) If approved for modification a copy of all documentation will be made and it will be held in the fire department files for a period of five years. The original form will be transmitted to the billing company authorizing the elimination of the patient's charges. The Fire District will notify the patient in writing as to the final disposition of the Hardship Waiver.
- 7) The Sonoma County Fire District will consider **138%** of the current HHS Poverty Guidelines as a guideline in granting a hardship waiver.

**SONOMA COUNTY FIRE DISTRICT EMS
TRANSPORT BILLING HARDSHIP APPLICATION**

(Note: A hardship application must be submitted for each EMS Transport Fee Adjustment Request)

Applicant Name: _____

SNN: _____

Applicant Address: _____

Contact Number: _____

Date of EMS Transport: _____

Service Requesting:

- My ambulance fee be waived
- My ambulance fee be reduced
- Establishment of a payment plan that better suits my ability to pay

Monthly Household Gross Income: _____ Number of dependents living in household: _____

In order for your application to be considered for approval, one or more of the below documents must be submitted with your application:

- W-2 withholding statements or unemployment check stubs for past 90 days
- Paycheck stubs for the past 90 days for all persons employed in the home
- Income tax return (most recent signed)
- Any other information you wish to provide that will help in our decision-making process

Responsible Party (if different from applicant):

Name: _____ Relationship: _____

Address (if different from above applicant): _____

Contact Number: _____

In your own words explain why you are requesting a Hardship Waiver:

I do hereby request that I, as either the applicant, or the party who is financially responsible for the applicant, be considered for a reduction in the payment responsibilities as they relate to this EMS transport service fee. **By signing this form, I certify that I am uninsured and currently have no insurance which can be billed for this charge. I declare that all of the information contained here within this document, along with all attachments, is true and accurate. Furthermore, I understand that I will be held liable for any false statements and/or information provided, pertaining to this waiver request.** I hereby agree to notify the Sonoma County Fire District of any change to the financial status of the applicant, or responsible party, which may affect their ability to pay the EMS Transport Fee.

Signature: _____ Date: _____

Print Name: _____

For questions regarding the hardship waiver process, please contact Heidi Flowers at (707) 892-2440 or via e-mail at hflowers@sonomacountyfd.org

Applications with all attachments can be mailed to:
Wittman Enterprises, LLC
11093 Sun Center Drive
Rancho Cordova, CA 95670

Administrative Use Only

Incident #: _____ Invoice Number: _____

Date of transport: _____

Date request received: _____

Claim: (circle) Approved Denied

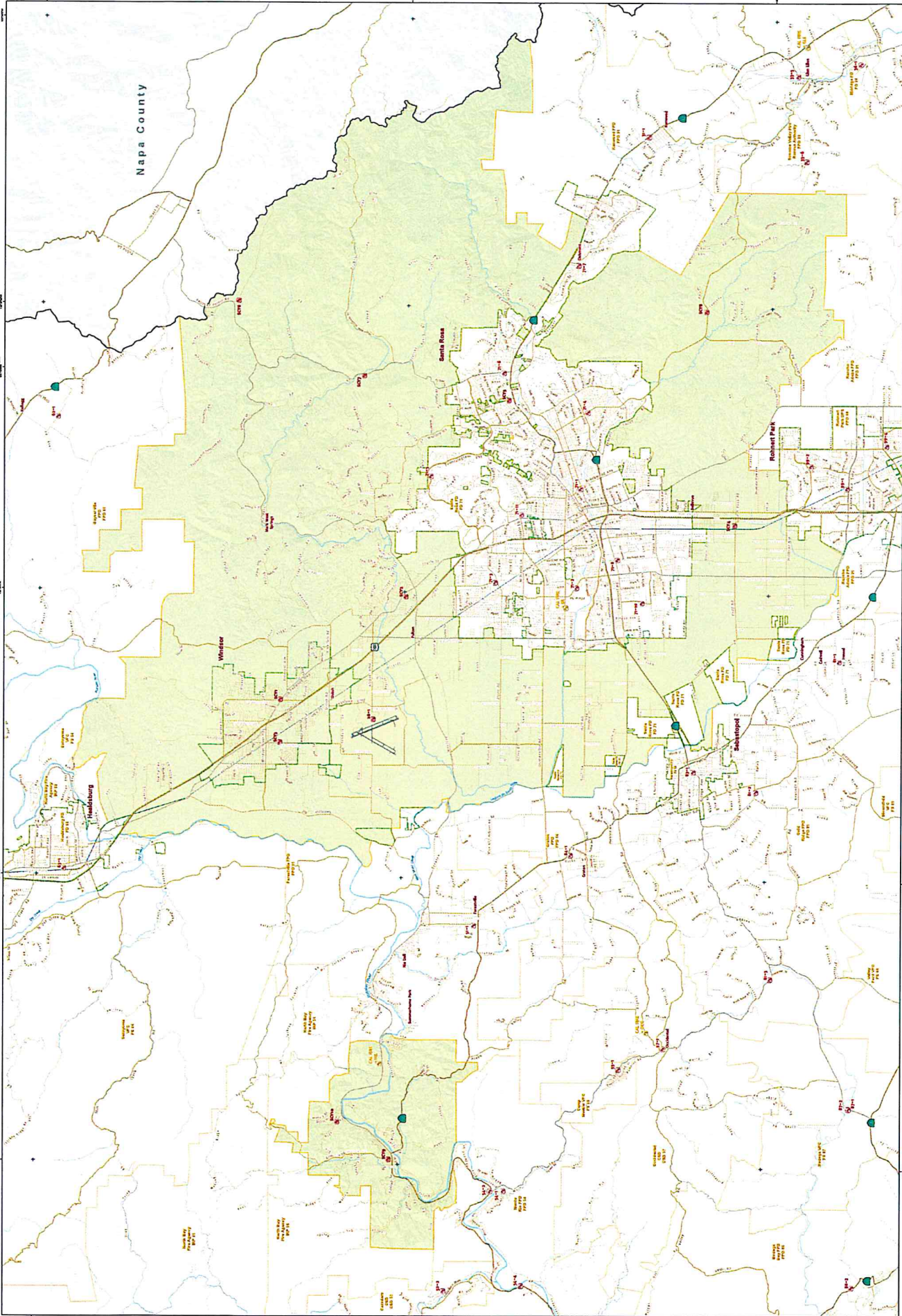
Reason: _____

Date Billing Company Notified: _____

Fire Chief Approval Signature: _____

Finance Director Approval Signature: _____

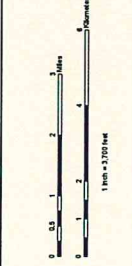
C O U N T Y O F S O N O M A



NOTE: This map is intended as a guide. It is not intended to be used as a legal document. The County of Sonoma is not responsible for any errors or omissions on this map. The County of Sonoma is not responsible for any errors or omissions on this map. The County of Sonoma is not responsible for any errors or omissions on this map.



1 inch = 2,700 feet



- Sonoma County Fire District Fire Station
- CDFR Fire Region
- Sonoma County Fire District
- Other Fire District
- Designated City Boundaries

DRAFT

Sonoma County Fire District
July 2020

Map Prepared by: Sonoma County Fire District
 Date: July 2020
 Scale: 1 inch = 2,700 feet

Program Eligibility by Federal Poverty Level for 2020

Medi-Cal and Covered California have various programs with overlapping income limits.

Household Size	Income Ranges											
	0%	100%	138%	150%	200%	213%	250%	266%	300%	322%	400%	600%
1	\$0	\$12,490	\$17,609	\$18,735	\$24,980	\$27,179	\$31,225	\$33,942	\$37,470	\$41,088	\$49,960	\$74,940
2	\$0	\$16,910	\$23,792	\$25,365	\$33,820	\$36,722	\$42,275	\$45,859	\$50,730	\$55,513	\$67,640	\$101,460
3	\$0	\$21,330	\$29,974	\$31,995	\$42,660	\$46,264	\$53,325	\$57,776	\$63,990	\$69,939	\$85,320	\$127,980
4	\$0	\$25,750	\$36,156	\$38,625	\$51,500	\$55,806	\$64,375	\$69,692	\$77,250	\$84,364	\$103,000	\$154,500
5	\$0	\$30,170	\$42,339	\$45,255	\$60,340	\$65,349	\$75,425	\$81,609	\$90,510	\$98,790	\$120,680	\$181,020
6	\$0	\$34,590	\$48,521	\$51,885	\$69,180	\$74,891	\$86,475	\$93,526	\$103,770	\$113,216	\$138,360	\$207,540
7	\$0	\$39,010	\$54,704	\$58,515	\$78,020	\$84,434	\$97,525	\$105,443	\$117,030	\$127,641	\$156,040	\$234,060
8	\$0	\$43,430	\$60,886	\$65,145	\$86,860	\$93,976	\$108,575	\$117,360	\$130,290	\$142,067	\$173,720	\$260,580
add'l, add	\$0	\$4,420	\$6,183	\$6,630	\$8,840	\$9,543	\$11,050	\$11,916	\$13,260	\$14,426	\$17,680	\$26,520

SEE NOTE BELOW FOR INCOMES IN THIS RANGE



Silver 94 (100%-150%)
 Silver 87 (>150%-200%)
 Silver 73 (>200%-250%)
 American Indian / Alaska Native (AIAN) Zero Cost Share
 AIAN Limited Cost Share

California State Subsidy
 Federal Tax Credit

Medi-Cal for Adults
 Medi-Cal for Pregnant Women
 Medi-Cal for Kids (0-18 Yrs.)
 Medi-Cal Access Program (for Pregnant Women)
 County Children's Health Initiative Program



Note: Most consumers up to 138% FPL will be eligible for Medi-Cal. If ineligible for Medi-Cal, consumers may qualify for a Covered California health plan with financial help including: federal tax credit, California state subsidy, Enhanced Silver plans and AIAN plans.

Sonoma County Fire District Emergency Medical Services Billing, Collection and Write-off Policy

PURPOSE:

To establish a policy for the provision, reimbursement, and write-offs of uncollectable accounts of emergency medical services provided by the Sonoma County Fire District.

SCOPE:

This policy covers all emergency medical service billing provided by the Sonoma County Fire District, whether directly or through a third part agency/collector.

PROCEDURES:

The Sonoma County Fire District recognizes the need to bill for these services to aid in the provision of EMS. Therefore, the Sonoma County Fire District shall bill for all EMS services provided.

No person requiring emergency medical services and/or transportation shall be denied services due to a lack of insurance or ability to pay levied charges.

Any applicable charges for EMS rendered shall be billed directly to the patient or the patient's third-party payer.

Sonoma County Fire District may, either directly or through any third-party billing agency, at its option, and shall, where required by law, bill insurers or carriers on a patient's behalf and may accept payment on an assignment basis.

All patients and/or their financially responsible parties, insurers, or carriers, will be billed for emergency medical services provided by the Sonoma County Fire District based upon usual and customary fees for these services:

1. All patients shall be liable for any co-payment, deductibles and patient responsibility amounts not satisfied by public or private insurance, and the Sonoma County Fire District shall balance bill and make reasonable collection efforts for all such balances. The Sonoma County Fire District may, either directly or through any third-party billing agency bill any applicable coinsurance carries for such amounts.
2. Exceptions include only those instances where the Sonoma County Fire District or its agent has determined that the cost of billing and collecting such co-payments, deductibles and patient responsibility amounts exceeds or is disproportionate to the amounts to be collected as determined by the Sonoma County Fire District's Emergency Medical Services Billing, Collection and Write-off Policy.

Sonoma County Fire District may, either directly or through any third-party billing agency with which it has contracted for billing and/or collections for emergency medical services, make arrangements with patients and/or their financially responsible party for installment payments of bills so long as the third-party billing agency determines that:

1. The financial condition of the patient requires such an arrangement; and
2. The patient and/or financially responsible party has demonstrated a willingness to make good faith efforts towards payment of the bill.

Sonoma County Fire District shall not balance bill when prohibited by law. As authorized by Health and Safety Code sections 13917 and 13919, the Sonoma County Fire District shall not balance bill patients who

pay a Sonoma County Fire District special tax or employees of the Sonoma County Fire District.

Providers must accept the Medicare allowed charge as payment in full and may not bill or collect from the beneficiary any amount other than the unmet Part B deductible and Part B coinsurance amounts for patients covered by Medicaid, Sonoma County Fire District will accept payment from Medicaid as payment for services and will not pursue the patient for the remaining balance of the invoice.

Write Off of Uncollectible Accounts

Sonoma County Fire District may contract with a private, third-party billing agency, to provide medical billing services. From time to time, the contractor may need direction for writing off uncollected debt. This policy is intended to provide that direction.

Sonoma County Fire District authorizes the third-party billing agency to bulk write off amounts not contractually allowed by Medicare and Medicaid and provide reports to Sonoma County Fire District of such write-offs.

For all commercial insurance and private pay clients; all appropriate charges shall be applied uniformly without regard to ability to pay or probability of payment.

Any account that has aged more than 180 days without activity or payment history, shall be referred to Sonoma County Fire District for review. The third-party billing agency must include all account documentation that demonstrates timely and efficient billing practices including but not limited to:

1. Account notes
2. Proof of billing statements and date of mailing(s) or electronic contact
3. Summary of the amount billed, and any current amount received
4. Summary of outstanding balances
5. Evidence of payment plan if applicable

After 180 days without payment, following the third collection attempt and if a hardship request has not been requested, the third-party billing agency will transfer uncollected balances to a collection agency designated by Sonoma County Fire District for continued collection efforts.

Write Off of Aged Accounts

In May of each year, the Fire Chief, EMS BC and Finance Manager or their designees, will review all unpaid accounts over 180 days due and determine which if any should be recommended to the Sonoma County Fire District Board of Directors to write-off. In June of each year, all recommendations for write-off's shall be submitted to the Board of Directors for approval. The EMS BC, Finance Manager, or their designee, shall promptly notify the third-party billing agency of any bills that should be written-off.

Attachment:

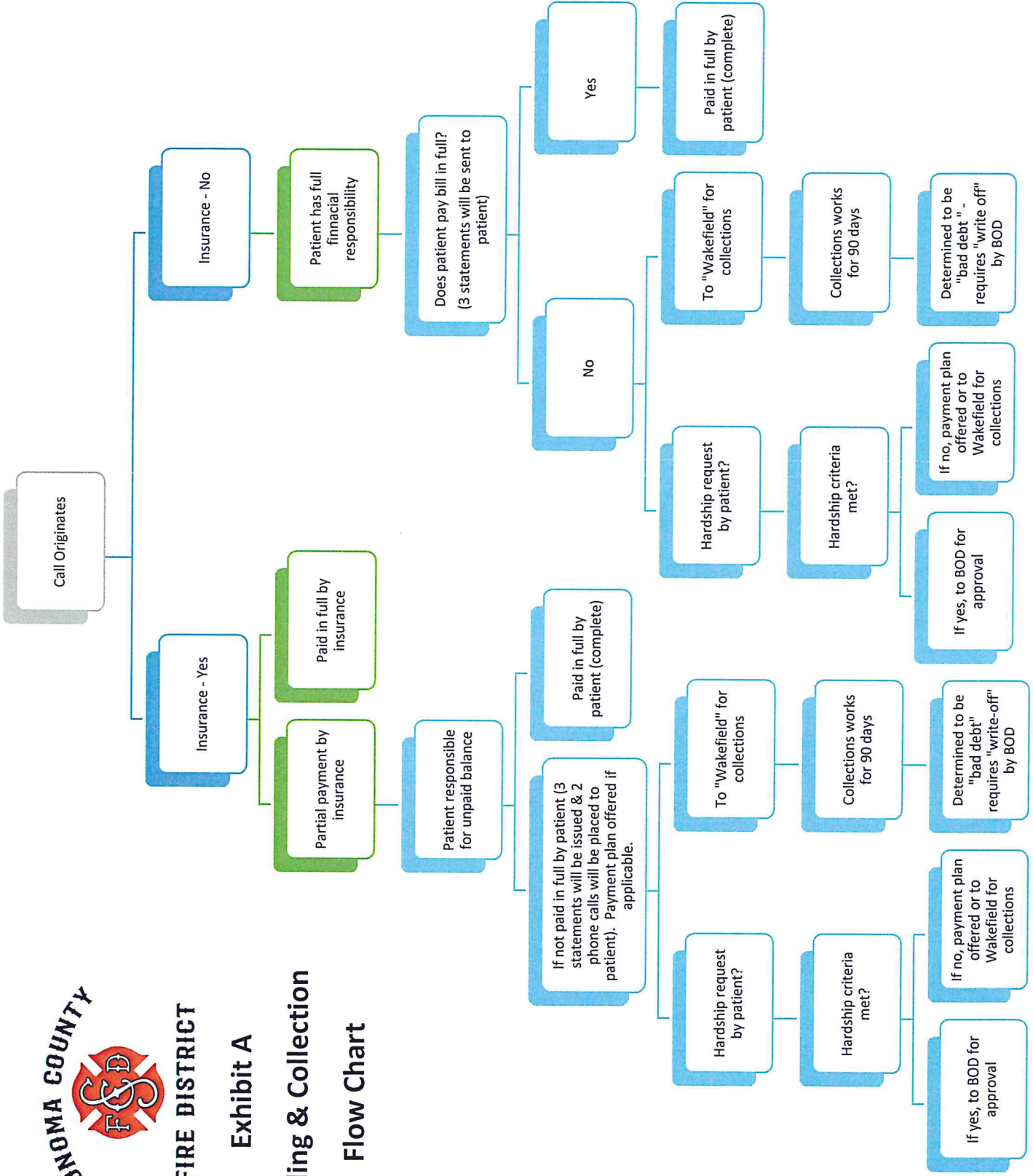
Exhibit A – Billing & Collection Flow Chart



Exhibit A

Billing & Collection

Flow Chart



**Sonoma County Fire District
Balance Sheet
As of July 31, 2020**

4:51 PM
08/11/20
Accrual Basis

	Jul 31, 20
ASSETS	
Current Assets	
Checking/Savings	
105-Summit- Checking	607,895.94
107-Summit- Payroll	52,686.81
109-Summit- ICS	9,120,478.82
CA Emp Retiree Benefit Trust	2,393,729.19
Total Checking/Savings	12,174,790.76
Total Current Assets	12,174,790.76
TOTAL ASSETS	12,174,790.76
LIABILITIES & EQUITY	
Equity	
Opening Balance Equity	2,393,729.19
Operating Transfer	5,771,871.75
Retained Earnings	5,593,074.80
Net Income	-1,583,884.98
Total Equity	12,174,790.76
TOTAL LIABILITIES & EQUITY	12,174,790.76

4:46 PM

08/11/20

Accrual Basis

Russian River Fire Protection District
Summary Balance Sheet
As of July 31, 2020

	Jul 31, 20
ASSETS	
Current Assets	
Checking/Savings	1,607,690.56
Total Current Assets	1,607,690.56
Fixed Assets	1,620,683.36
Other Assets	1,051,526.00
TOTAL ASSETS	4,279,899.92
LIABILITIES & EQUITY	
Liabilities	
Current Liabilities	210,539.96
Other Current Liabilities	
Total Current Liabilities	210,539.96
Long Term Liabilities	1,985,303.00
Total Liabilities	2,195,842.96
Equity	2,084,056.96
TOTAL LIABILITIES & EQUITY	4,279,899.92

Sonoma County Fire District

Profit & Loss Budget vs. Actual

July 2020

	Jul 20	Budget	\$ Over Budget	% of Budget
Ordinary Income/Expense				
Income				
10 - Taxes				
1000 Property Taxes- CY Secured	0.00			
1001 CY Special Tax	0.00			
1014 AB 1290 RDA Pass-Through	0.00			
1017- Residual Prop Tax	0.00			
1020 Prop Taxes- CY Supp	0.00			
1040 Prop Taxes- CY Unsecured	0.00			
1060 Prop Taxes PY Secured	0.00			
1061 PY Special Tax	0.00			
1080 Supp Prop Tax PY	0.00			
1100 Prop Taxes PY Unsecured	0.00			
Total 10 - Taxes	<u>0.00</u>			
17- Use of Money/Property				
1700 Interest on Pooled Cash	0.00			
1800 Rents & Concessions	2,202.80			
Total 17- Use of Money/Property	<u>2,202.80</u>			
20- Intergovernmental Revenues				
2440 ST HOPTR	0.00			
Total 20- Intergovernmental Revenues	<u>0.00</u>			
30- Charges for Services				
3145 Plans & Specs	976.50			
3700 Copy/Transcribe Fee	10.00			
Total 30- Charges for Services	<u>986.50</u>			
40- Miscellaneous Revenue				
4040 Misc. Revenue	252.84			
4041 Graton Rancheria	188,326.38			
4103 Work Comp Reimbursement	10,394.84			
Total 40- Miscellaneous Revenue	<u>198,974.06</u>			
Total Income	<u>202,163.36</u>			

Sonoma County Fire District Profit & Loss Budget vs. Actual July 2020

	Jul 20	Budget	\$ Over Budget	% of Budget
Expense				
50 Salaries/Employ Benefits				
5907 AFF	7,400.00			
5910 Perm Position	638,914.64			
5911 Part Time	1,982.40			
5912 Overtime	149,153.96			
5913 On-Call Stipends	5,775.00			
5914 Overtime-ST	22,809.48			
5919 Overtime-COVID	3,463.25			
5923 PERS District Expense	139,166.01			
5924 Medi/FICA	5,482.50			
5930 Health Insurance	252,678.80			
5931 Disability Insurance	3,740.00			
5932 Dental Insurance	17,748.24			
5933 Life Insurance	2,107.41			
5934 Vision Insurance	1,444.16			
5935 Unemployment Insure	-1,780.86			
5940 Work Comp Premium	26,893.00			
5972 Medical Stipend	3,060.00			
Total 50 Salaries/Employ Benefits	1,280,037.99			
60 - Services/Supplies				
6015 Annexation Costs	5,649.10			
6021 Uniform Expense	350.00			
6022 Safety Clothing	3,269.49			
6040 Communications	80.66			
6060 Food	0.00			
6084 Janitorial Supplies	842.04			
6100-Insurance				
6140 Maintenance Equip. & Appar	74,171.00			
6180 Maintenance Buildings/Imp.	25,180.98			
6261 Medical Supplies	574.31			
6280 Memberships	1,611.45			
6400 Office Expense	525.00			
6410 Postage	109.84			
6457 Computer Charges	0.00			
6461 Supplies/Expenses	1,024.99			
6463 Resource Materials	0.00			
6500 Professional Services	4,293.65			
6501 Abatement Contractors	50,282.07			
6526 Dispatch Services	945.00			
6587 LAFCO charges	-3,246.00			
6610 Legal Services	29,338.00			
6633 Payroll Expense	5,628.00			
6634 Bank Service Charges	1,007.90			
6820 Rent/Leases Equipment	10.00			
	5,773.87			

**Sonoma County Fire District
Profit & Loss Budget vs. Actual
July 2020**

	Jul 20	Budget	\$ Over Budget	% of Budget
6880 Small Tools/Instruments	0.00			
6881 Safety Equipment	0.00			
7120 Training-in-Service	200.00			
7150- Employee Recognition	0.00			
7201 Gas/Oil	2,444.36			
7320 Utilities	5,285.78			
Total 60 - Services/Supplies	215,351.49			
75 - Long Term Debt				
7910 LT Debt Principal	29,087.93			
7930 Interest on LT Debt	8,597.99			
Total 75 - Long Term Debt	37,685.92			
85 - Capital Expenditures				
8510 Buildings/Equipment	143,729.20			
8560 Equipment	109,243.74			
Total 85 - Capital Expenditures	252,972.94			
Total Expense	1,786,048.34			
Net Ordinary Income	-1,583,884.98			
Net Income	-1,583,884.98	0.00	-1,583,884.98	100.0%

Russian River Fire Protection District
 Profit & Loss Budget vs. Actual
 July 2020

	Jul 20	Budget	\$ Over Budget	% of Budget
Income				
10 · Taxes				
1000 · Property Taxes - CY Secured	0.00			
1001 · CY Direct Charges	0.00			
1014 · AB 1290 RDA Pass-Throughs	0.00			
1017 · Residual Prop Tax-RPTTF	0.00			
1020 · Property Taxes - CY Supp	0.00			
1040 · Property Taxes - CY Unsecured	0.00			
1060 · Prop Taxes-PY, Secured	0.00			
1061 · PY Direct Charges	0.00			
1080 · Supplemental Prop Taxes-PY	0.00			
1100 · Property Taxes - PY Unsecured	0.00			
Total 10 · Taxes	<u>0.00</u>			
17 · Use of Money/Property	0.00			
1700 · Interest on Pooled Cash	0.00			
Total 17 · Use of Money/Property	<u>0.00</u>			
20 · Intergovernmental Revenues				
2440 · ST-HOPTR	0.00			
Total 20 · Intergovernmental Revenues	<u>0.00</u>			
30 · Charges for Services				
3670 · Ambulance Billings	67,370.28			
Total 30 · Charges for Services	<u>67,370.28</u>			
40 · Miscellaneous Revenues				
4015 · Interest Earned	16.47			
Total 40 · Miscellaneous Revenues	<u>16.47</u>			
Total Income	<u>67,386.75</u>			
Gross Profit	<u>67,386.75</u>			
Expense				
50 · Salaries/Employment Benefits	91,398.57			
5910 · Perm Positions - LOC BDS	43,952.43			
5912 · Overtime-LOC BDS	27,135.29			
5923 · PERS-LOC BDS	1,950.22			
5924 · Medicare - LOC BDS	-274.56			
5930 · Health Insurance - LOC BDS				

**Russian River Fire Protection District
Profit & Loss Budget vs. Actual
July 2020**

	Jul 20	Budget	\$ Over Budget	% of Budget
5933 · Life Insurance	-49.00			
5934 · Visions Insurance - LOC BDS	-58.08			
Total 50 · Salaries/Employment Benefits	164,054.87			
60 · Services/Supplies				
6040 · Communications	0.00			
6140 · Maintenance Equipment	0.00			
6400 · Office Expense	0.00			
6457 · Computer Charges	1,200.00			
6500 · Professional/Special Services	4,913.96			
6634 · Bank Fees	85.00			
6666 · Ambulance Charges	0.00			
7051 · Refunds	0.00			
7201 · Gas/Oil	0.00			
7320 · Utilities	0.00			
Total 60 · Services/Supplies	6,198.96			
Total Expense	170,253.83			
Net Income	-102,867.08			